

For Research Use Only

CPE Recombinant Matched Antibody Pair, PBS Only



Catalog Number:MP02472-1

Capture Antibody Information

Catalog Number: 86111-2-PBS	Clone ID: 250680C9	Conjugate: Unconjugated
Host: Rabbit	Reactivity: human	Full name: carboxypeptidase E
Isotype: IgG	Immunogen Catalog Number: Eg2989	Gene ID: 1363
Purification Method: Protein A purification		

Detection Antibody Information

Catalog Number: 86111-1-PBS	Clone ID: 250680F12	Conjugate: Unconjugated
Host: Rabbit	Reactivity: human, mouse, rat	Full name: carboxypeptidase E
Isotype: IgG	GenBank: NM_001873.4	Gene ID: 1363
Purification Method: Protein A purification	Immunogen Catalog Number: Eg2989	

Applications

Tested Applications: Sandwich ELISA	Range: 1.56-50 ng/mL (Sandwich ELISA)	Recommended Dilutions: It is recommended that this reagent should be titrated in each testing system to obtain optimal results.
----------------------------------------	------------------------------------------	------------------------------------------------------------------------------------------------------------------------------------

Product Information

MP02472-1 targets CPE in immunoassays as a matched antibody pair. Validated in Sandwich ELISA.

Capture antibody: CPE Recombinant antibody, PBS Only (Capture) 86111-2-PBS (250680C9). 100 µg. Concentration 1 mg/mL.

Detection antibody: CPE Recombinant antibody, PBS Only (Detector) 86111-1-PBS (250680F12). 100 µg. Concentration 1 mg/mL.

Unconjugated rabbit recombinant monoclonal antibody pair in PBS only storage buffer at a concentration of 1 mg/mL, ready for conjugation. Created using Proteintech's proprietary in-house recombinant technology. Recombinant production enables unrivalled batch-to-batch consistency, easy scale-up, and future security of supply.

Matched antibody pairs are designed for use in a variety of assays and platforms that require matched antibody pairs.

Antibody use should be optimized for each application and assay.

Storage

Storage:
Store at -80°C.
Storage buffer:
PBS only

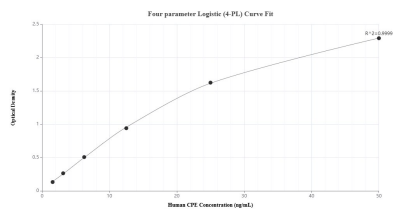
For technical support and original validation data for this product please contact:

T: 1 (888) 4PTGLAB (1-888-478-4522) (toll free in USA), or 1(312) 455-8498 (outside USA)

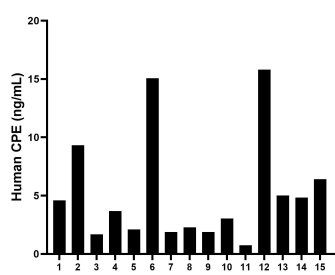
E: proteintech@ptglab.com
W: ptglab.com

This product is exclusively available under Proteintech Group brand and is not available to purchase from any other manufacturer.

Selected Validation Data



Sandwich ELISA standard curve of MP02472-1, Human CPE Recombinant Matched Antibody Pair - PBS only. 86111-2-PBS was coated to a plate as the capture antibody and incubated with serial dilutions of standard Eg2989. 86111-1-PBS was HRP conjugated as the detection antibody. Range: 1.56-50 ng/mL



Serum of fifteen individual healthy human donors was measured. The human CPE concentration of detected samples was determined to be 5.22 ng/mL with a range of 0.76 - 15.81 ng/mL.