

GTF2F1 Recombinant Matched Antibody Pair, PBS Only

Catalog Number:MP02475-1

Capture Antibody Information

Catalog Number:

86494-2-PBS

Host:

Rabbit

Isotype:

IgG

Purification Method:

Protein A purification

Clone ID:

251305C4

Reactivity:

human

Immunogen Catalog Number:

Ag0133

Conjugate:

Unconjugated

Full name:

general transcription factor IIF, polypeptide 1, 74kDa

Gene ID:

2962

Detection Antibody Information

Catalog Number:

86494-1-PBS

Host:

Rabbit

Isotype:

IgG

Purification Method:

Protein A purification

Clone ID:

251305C6

Reactivity:

human

GenBank:

BC000120

Immunogen Catalog Number:

Ag0133

Conjugate:

Unconjugated

Full name:

general transcription factor IIF, polypeptide 1, 74kDa

Gene ID:

2962

Applications

Tested Applications:

Cytometric bead array

Range:

0.625-80 ng/mL (Cytometric Bead Array)

Recommended Dilutions:

It is recommended that this reagent should be titrated in each testing system to obtain optimal results.

Product Information

MP02475-1 targets GTF2F1 in immunoassays as a matched antibody pair. Validated in Cytometric bead array.

Capture antibody: GTF2F1 Recombinant monoclonal antibody, PBS Only (Capture) 86494-2-PBS (251305C4). 100 µg. Concentration 1 mg/mL.

Detection antibody: GTF2F1 Recombinant monoclonal antibody, PBS Only (Detector) 86494-1-PBS (251305C6). 100 µg. Concentration 1 mg/mL.

Unconjugated rabbit recombinant monoclonal antibody pair in PBS only storage buffer at a concentration of 1 mg/mL, ready for conjugation. Created using Proteintech's proprietary in-house recombinant technology. Recombinant production enables unrivalled batch-to-batch consistency, easy scale-up, and future security of supply.

Matched antibody pairs are designed for use in a variety of assays and platforms that require matched antibody pairs.

Antibody use should be optimized for each application and assay.

Storage

Storage:

Store at -80°C.

Storage buffer:

PBS only

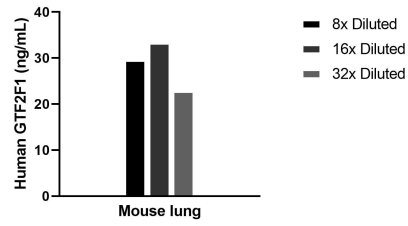
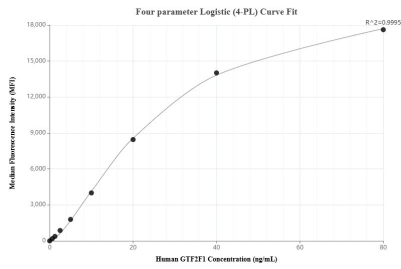
For technical support and original validation data for this product please contact:

T: 1 (888) 4PTGLAB (1-888-478-4522) (toll free in USA), or 1(312) 455-8498 (outside USA)

E: proteintech@ptglab.com
W: ptglab.com

This product is exclusively available under Proteintech Group brand and is not available to purchase from any other manufacturer.

Selected Validation Data



Cytometric bead array standard curve of MP02475-1, GTF2F1 Recombinant Matched Antibody Pair, PBS Only. Capture antibody: 86494-2-PBS. Detection antibody: 86494-1-PBS. Standard: Ag0133. Range: 0.625-80 ng/mL

The mean GTF2F1 concentration was determined to be 28.6 ng/mL in Mouse lung tissue extract based on a 5.9 mg/mL extract load.