

For Research Use Only

Mouse CDNF Recombinant Matched Antibody Pair, PBS Only



Catalog Number:MP02479-1

Capture Antibody Information

Catalog Number:
86264-2-PBS
Host:
Rabbit
Isotype:
IgG
Purification Method:
Protein A purification

Clone ID:
250599E10
Reactivity:
mouse
Immunogen Catalog Number:
Eg2845

Conjugate:
Unconjugated
Full name:
arginine-rich, mutated in early stage tumors-like 1
Gene ID:
227526

Detection Antibody Information

Catalog Number:
86264-1-PBS
Host:
Rabbit
Isotype:
IgG
Purification Method:
Protein A purification

Clone ID:
250599B3
Reactivity:
mouse
GenBank:
NM_177647.4
Immunogen Catalog Number:
Eg2845

Conjugate:
Unconjugated
Full name:
arginine-rich, mutated in early stage tumors-like 1
Gene ID:
227526

Applications

Tested Applications:
Sandwich ELISA

Range:
46.9-3000 pg/mL (Sandwich ELISA)

Recommended Dilutions:
It is recommended that this reagent should be titrated in each testing system to obtain optimal results.

Product Information

MP02479-1 targets CDNF in immunoassays as a matched antibody pair. Validated in Sandwich ELISA.

Capture antibody: Mouse Armet1 Recombinant antibody, PBS Only (Capture) 86264-2-PBS (250599E10). 100 µg. Concentration 1 mg/mL.

Detection antibody: Mouse Armet1 Recombinant antibody, PBS Only (Detector) 86264-1-PBS (250599B3). 100 µg. Concentration 1 mg/mL.

Unconjugated rabbit recombinant monoclonal antibody pair in PBS only storage buffer at a concentration of 1 mg/mL, ready for conjugation. Created using Proteintech's proprietary in-house recombinant technology. Recombinant production enables unrivalled batch-to-batch consistency, easy scale-up, and future security of supply.

Matched antibody pairs are designed for use in a variety of assays and platforms that require matched antibody pairs.

Antibody use should be optimized for each application and assay.

Storage

Storage:
Store at -80°C.
Storage buffer:
PBS only

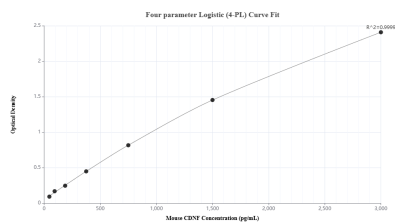
For technical support and original validation data for this product please contact:

T: 1 (888) 4PTGLAB (1-888-478-4522) (toll free in USA), or 1(312) 455-8498 (outside USA)

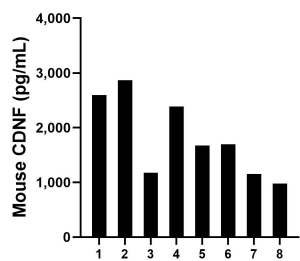
E: proteintech@ptglab.com
W: ptglab.com

This product is exclusively available under Proteintech Group brand and is not available to purchase from any other manufacturer.

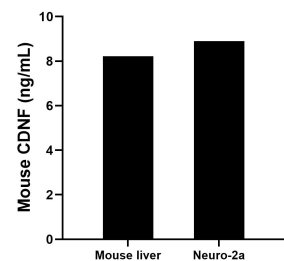
Selected Validation Data



Sandwich ELISA standard curve of MP02479-1, Mouse CDNF Recombinant Matched Antibody Pair - PBS only. 86264-2-PBS was coated to a plate as the capture antibody and incubated with serial dilutions of standard Eg2845. 86264-1-PBS was HRP conjugated as the detection antibody. Range: 46.9-3000 pg/mL



Serum of eight mice was measured. The mouse CDNF concentration of detected samples was determined to be 1,814.8 pg/mL with a range of 975.9 - 2,868.5 pg/mL.



The mean CDNF concentration was determined to be 9.22 ng/mL in mouse liver tissue extract based on a 8.4 mg/mL extract load and 8.90 ng/mL in Neuro-2a cell extract based on a 1.6 mg/mL extract load.