

For Research Use Only

# SH3D19 Recombinant Matched Antibody Pair, PBS Only



Catalog Number:MP02487-1

## Capture Antibody Information

Catalog Number:  
86522-2-PBS

Host:  
Rabbit

Isotype:  
IgG

Purification Method:  
Protein A purification

Clone ID:  
251364A12

Reactivity:  
human

Immunogen Catalog Number:  
Ag16200

Conjugate:  
Unconjugated

Full name:  
SH3 domain containing 19

Gene ID:  
152503

## Detection Antibody Information

Catalog Number:  
86522-1-PBS

Host:  
Rabbit

Isotype:  
IgG

Purification Method:  
Protein A purification

Clone ID:  
251364F3

Reactivity:  
human

GenBank:  
BC108890

Immunogen Catalog Number:  
Ag16200

Conjugate:  
Unconjugated

Full name:  
SH3 domain containing 19

Gene ID:  
152503

## Applications

Tested Applications:  
Cytometric bead array

Range:  
0.312-40 ng/mL (Cytometric Bead Array)

Recommended Dilutions:  
It is recommended that this reagent should be titrated in each testing system to obtain optimal results.

## Product Information

MP02487-1 targets SH3D19 in immunoassays as a matched antibody pair. Validated in Cytometric bead array.

Capture antibody: SH3D19 Recombinant monoclonal antibody, PBS Only (Capture) 86522-2-PBS (251364A12). 100 µg. Concentration 1 mg/mL.

Detection antibody: SH3D19 Recombinant monoclonal antibody, PBS Only (Detector) 86522-1-PBS (251364F3). 100 µg. Concentration 1 mg/mL.

Unconjugated rabbit recombinant monoclonal antibody pair in PBS only storage buffer at a concentration of 1 mg/mL, ready for conjugation. Created using Proteintech's proprietary in-house recombinant technology. Recombinant production enables unrivalled batch-to-batch consistency, easy scale-up, and future security of supply.

Matched antibody pairs are designed for use in a variety of assays and platforms that require matched antibody pairs.

Antibody use should be optimized for each application and assay.

## Storage

Storage:  
Store at -80°C.  
Storage buffer:  
PBS only

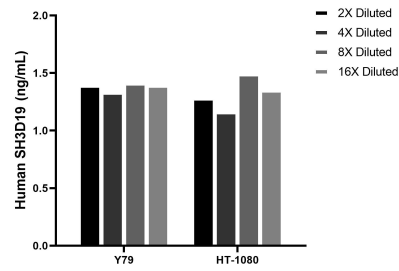
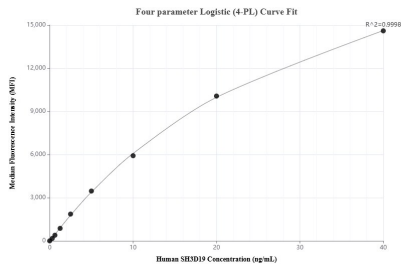
For technical support and original validation data for this product please contact:

T: 1 (888) 4PTGLAB (1-888-478-4522) (toll free in USA), or 1(312) 455-8498 (outside USA)

E: [proteintech@ptglab.com](mailto:proteintech@ptglab.com)  
W: [ptglab.com](http://ptglab.com)

**This product is exclusively available under Proteintech Group brand and is not available to purchase from any other manufacturer.**

## Selected Validation Data



Cytometric bead array standard curve of MPO2487-1, SH3D19 Recombinant Matched Antibody Pair, PBS Only. Capture antibody: 86522-2-PBS. Detection antibody: 86522-1-PBS. Standard: Ag16200. Range: 0.312-40 ng/mL.

The mean SH3D19 concentration was determined to be 1.4 ng/mL in Y79 cell extract based on a 1.1 mg/mL extract load, 1.3 ng/mL in HT-1080 cell extract based on a 1.4 mg/mL extract load.