

For Research Use Only

Mouse JAM-A/CD321 Recombinant Matched Antibody Pair, PBS Only



Catalog Number:MP02492-1

Capture Antibody Information

Catalog Number:
86229-4-PBS

Host:
Rabbit

Isotype:
IgG

Purification Method:
Protein A purification

Clone ID:
250060G12

Reactivity:
mouse

Immunogen Catalog Number:
Eg3117

Conjugate:
Unconjugated

Full name:
F11 receptor

Gene ID:
16456

Detection Antibody Information

Catalog Number:
86229-3-PBS

Host:
Rabbit

Isotype:
IgG

Purification Method:
Protein A purification

Clone ID:
250060G8

Reactivity:
mouse

GenBank:
NM_172647.2

Immunogen Catalog Number:
Eg3117

Conjugate:
Unconjugated

Full name:
F11 receptor

Gene ID:
16456

Applications

Tested Applications:
Sandwich ELISA

Range:
31.25-2000 pg/mL (Sandwich ELISA)

Recommended Dilutions:
It is recommended that this reagent should be titrated in each testing system to obtain optimal results.

Product Information

MP02492-1 targets JAM-A/CD321 in immunoassays as a matched antibody pair. Validated in Sandwich ELISA.

Capture antibody: Mouse F11r CD321 Recombinant antibody, PBS Only (Capture) 86229-4-PBS (250060G12). 100 µg. Concentration 1 mg/mL.

Detection antibody: Mouse F11r CD321 Recombinant antibody, PBS Only (Detector) 86229-3-PBS (250060G8). 100 µg. Concentration 1 mg/mL.

Unconjugated rabbit recombinant monoclonal antibody pair in PBS only storage buffer at a concentration of 1 mg/mL, ready for conjugation. Created using Proteintech's proprietary in-house recombinant technology. Recombinant production enables unrivalled batch-to-batch consistency, easy scale-up, and future security of supply.

Matched antibody pairs are designed for use in a variety of assays and platforms that require matched antibody pairs.

Antibody use should be optimized for each application and assay.

Storage

Storage:
Store at -80°C.
Storage buffer:
PBS only

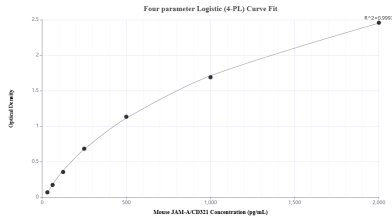
For technical support and original validation data for this product please contact:

T: 1 (888) 4PTGLAB (1-888-478-4522) (toll free in USA), or 1(312) 455-8498 (outside USA)

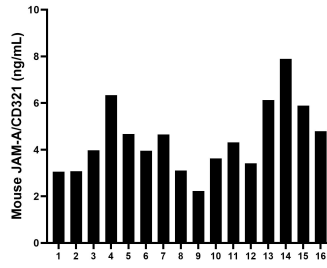
E: proteintech@ptglab.com
W: ptglab.com

This product is exclusively available under Proteintech Group brand and is not available to purchase from any other manufacturer.

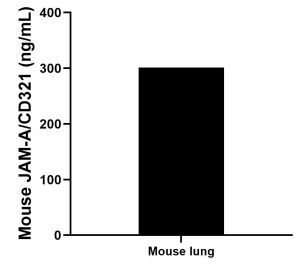
Selected Validation Data



Sandwich ELISA standard curve of MP02492-1, Mouse JAM-A/CD321 Recombinant Matched Antibody Pair - PBS only. 86229-4-PBS was coated to a plate as the capture antibody and incubated with serial dilutions of standard Eg3117. 86229-3-PBS was HRP conjugated as the detection antibody. Range: 31.25-2000 pg/mL



Serum of sixteen mice was measured. The mouse JAM-A/CD321 concentration of detected samples was determined to be 4.44 ng/mL with a range of 2.23 - 7.90 ng/mL.



The mean JAM-A/CD321 concentration was determined to be 301.19 ng/mL in mouse lung tissue extract based on a 5.3 mg/mL extract load.