

For Research Use Only

MSPR/Ron/CD136 Recombinant Matched Antibody Pair, PBS Only



Catalog Number:MP02494-1

Capture Antibody Information

Catalog Number:
86539-2-PBS
Host:
Rabbit
Isotype:
IgG
Purification Method:
Protein A purification

Clone ID:
251102G6
Reactivity:
human
Immunogen Catalog Number:
Eg3493

Conjugate:
Unconjugated
Full name:
macrophage stimulating 1 receptor (c-met-related tyrosine kinase)
Gene ID:
4486

Detection Antibody Information

Catalog Number:
86539-1-PBS
Host:
Rabbit
Isotype:
IgG
Purification Method:
Protein A purification

Clone ID:
251102E4
Reactivity:
human
GenBank:
NM_002447.4
Immunogen Catalog Number:
Eg3493

Conjugate:
Unconjugated
Full name:
macrophage stimulating 1 receptor (c-met-related tyrosine kinase)
Gene ID:
4486

Applications

Tested Applications:
Cytometric bead array, Sandwich ELISA

Range:
0.156-20 ng/mL (Cytometric Bead Array)
19.5-1250 pg/mL (Sandwich ELISA)

Recommended Dilutions:
It is recommended that this reagent should be titrated in each testing system to obtain optimal results.

Product Information

MP02494-1 targets MSPR/Ron/CD136 in immunoassays as a matched antibody pair. Validated in Cytometric bead array, Sandwich ELISA.

Capture antibody: MSPR/Ron/CD136 Recombinant monoclonal antibody, PBS Only (Capture) 86539-2-PBS (251102G6). 100 µg. Concentration 1 mg/ml.

Detection antibody: MSPR/Ron/CD136 Recombinant monoclonal antibody, PBS Only (Detector) 86539-1-PBS (251102E4). 100 µg. Concentration 1 mg/ml.

Unconjugated rabbit recombinant monoclonal antibody pair in PBS only storage buffer at a concentration of 1 mg/mL, ready for conjugation. Created using Proteintech's proprietary in-house recombinant technology. Recombinant production enables unrivalled batch-to-batch consistency, easy scale-up, and future security of supply.

Matched antibody pairs are designed for use in a variety of assays and platforms that require matched antibody pairs.

Antibody use should be optimized for each application and assay.

Storage

Storage:
Store at -80°C.
Storage buffer:
PBS only

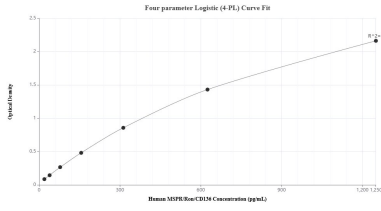
For technical support and original validation data for this product please contact:

T: 1 (888) 4PTGLAB (1-888-478-4522) (toll free in USA), or 1(312) 455-8498 (outside USA)

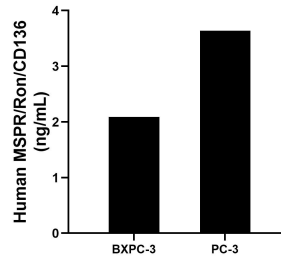
E: proteintech@ptglab.com
W: ptglab.com

This product is exclusively available under Proteintech Group brand and is not available to purchase from any other manufacturer.

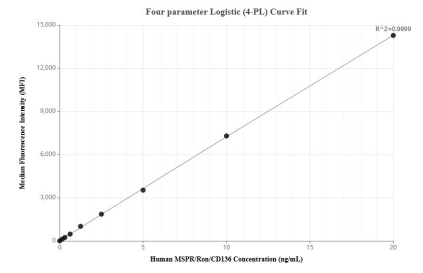
Selected Validation Data



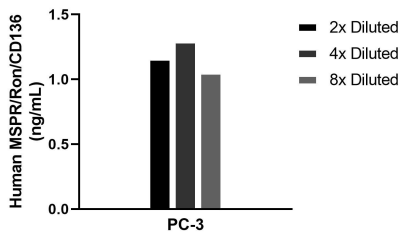
Sandwich ELISA standard curve of MP02494-1, Human MSPR/Ron/CD136 Recombinant Matched Antibody Pair - PBS only. 86539-2-PBS was coated to a plate as the capture antibody and incubated with serial dilutions of standard Eg3493. 86539-1-PBS was HRP conjugated as the detection antibody. Range: 19.5-1250 pg/mL



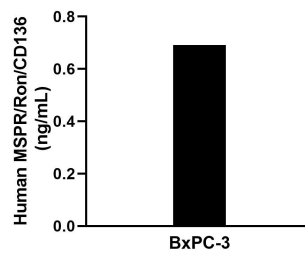
The mean MSPR/Ron/CD136 concentration was determined to be 2.09 ng/mL in BxPC-3 cell extract based on a 1.2 mg/mL extract load and 3.64 ng/mL in PC-3 cell extract based on a 1.3 mg/mL extract load.



Cytometric bead array standard curve of MP02494-1, MSPR/Ron/CD136 Recombinant Matched Antibody Pair, PBS Only. Capture antibody: 86539-2-PBS. Detection antibody: 86539-1-PBS. Standard: Eg3493. Range: 0.156-20 ng/mL



The mean MSPR/Ron/CD136 concentration was determined to be 1.2 ng/mL in PC-3 cell extract based on a 1.1 mg/mL extract load.



The mean MSPR/Ron/CD136 concentration was determined to be 0.7 ng/mL in BxPC-3 cell extract based on a 5.4 mg/mL extract load.