

For Research Use Only

CNN3 Recombinant Matched Antibody Pair, PBS Only



Catalog Number:MP02515-1

Capture Antibody Information

Catalog Number:

86550-2-PBS

Host:

Rabbit

Isotype:

IgG

Purification Method:

Protein A purification

Clone ID:

251475E4

Reactivity:

human

Immunogen Catalog Number:

Ag2068

Conjugate:

Unconjugated

Full name:

calponin 3, acidic

Gene ID:

1266

Detection Antibody Information

Catalog Number:

86550-1-PBS

Host:

Rabbit

Isotype:

IgG

Purification Method:

Protein A purification

Clone ID:

251475H4

Reactivity:

human

GenBank:

BC025372

Immunogen Catalog Number:

Ag2068

Conjugate:

Unconjugated

Full name:

calponin 3, acidic

Gene ID:

1266

Applications

Tested Applications:

Cytometric bead array, Sandwich ELISA

Range:

0.625-80 ng/mL (Cytometric Bead Array)
0.391-25 ng/mL (Sandwich ELISA)

Recommended Dilutions:

It is recommended that this reagent should be titrated in each testing system to obtain optimal results.

Product Information

MP02515-1 targets CNN3 in immunoassays as a matched antibody pair. Validated in Cytometric bead array, Sandwich ELISA.

Capture antibody: CNN3 Recombinant monoclonal antibody, PBS Only (Capture) 86550-2-PBS (251475E4). 100 µg. Concentration 1 mg/mL.

Detection antibody: CNN3 Recombinant monoclonal antibody, PBS Only (Detector) 86550-1-PBS (251475H4). 100 µg. Concentration 1 mg/mL.

Unconjugated rabbit recombinant monoclonal antibody pair in PBS only storage buffer at a concentration of 1 mg/mL, ready for conjugation. Created using Proteintech's proprietary in-house recombinant technology. Recombinant production enables unrivalled batch-to-batch consistency, easy scale-up, and future security of supply.

Matched antibody pairs are designed for use in a variety of assays and platforms that require matched antibody pairs.

Antibody use should be optimized for each application and assay.

Storage

Storage:

Store at -80°C.

Storage buffer:

PBS only

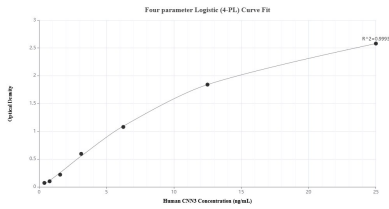
For technical support and original validation data for this product please contact:

T: 1 (888) 4PTGLAB (1-888-478-4522) (toll free in USA), or 1(312) 455-8498 (outside USA)

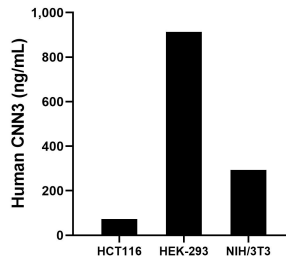
E: proteintech@ptglab.com
W: ptglab.com

This product is exclusively available under Proteintech Group brand and is not available to purchase from any other manufacturer.

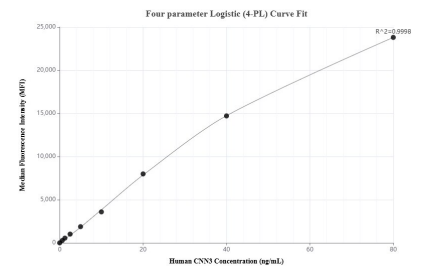
Selected Validation Data



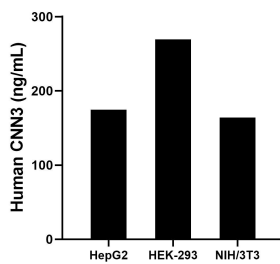
Sandwich ELISA standard curve of MP02515-1, Human CNN3 Recombinant Matched Antibody Pair - PBS only. 86550-2-PBS was coated to a plate as the capture antibody and incubated with serial dilutions of standard Ag2068. 86550-1-PBS was HRP conjugated as the detection antibody. Range: 0.391-25 ng/mL



The mean CNN3 concentration was determined to be 73.47 ng/mL in HCT116 cell extract based on a 1.3 mg/mL extract load, 913.07 ng/mL in HEK-293 cell extract based on a 1.2 mg/mL extract load and 292.95 ng/mL in NIH/3T3 cell extract based on a 1.2 mg/mL extract load.



Cytometric bead array standard curve of MP02515-1, CNN3 Recombinant Matched Antibody Pair, PBS Only. Capture antibody: 86550-2-PBS. Detection antibody: 86550-1-PBS. Standard: Ag2068. Range: 0.625-80 ng/mL



The mean CNN3 concentration was determined to be 176.6 ng/mL in HepG2 cell extract based on a 1.5 mg/mL extract load, 269.5 ng/mL in HEK-293 cell extract based on a 1.1 mg/mL extract load, 164.0 ng/mL in NIH/3T3 cell extract based on a 1.4 mg/mL extract load.