

For Research Use Only

# MMS2 Recombinant Matched Antibody Pair, PBS Only



Catalog Number:MP02524-1

## Capture Antibody Information

Catalog Number:  
86551-2-PBS

Host:  
Rabbit

Isotype:  
IgG

Purification Method:  
Protein A purification

Clone ID:  
251485H1

Reactivity:  
human

Immunogen Catalog Number:  
Ag1111

Conjugate:  
Unconjugated

Full name:  
ubiquitin-conjugating enzyme E2  
variant 2

Gene ID:  
7336

## Detection Antibody Information

Catalog Number:  
86551-1-PBS

Host:  
Rabbit

Isotype:  
IgG

Purification Method:  
Protein A purification

Clone ID:  
251485F1

Reactivity:  
human

GenBank:  
BC007051

Immunogen Catalog Number:  
Ag1111

Conjugate:  
Unconjugated

Full name:  
ubiquitin-conjugating enzyme E2  
variant 2

Gene ID:  
7336

## Applications

Tested Applications:  
Cytometric bead array, Sandwich  
ELISA

Range:  
6.25-200 ng/mL (Cytometric Bead  
Array)  
0.781-50 ng/mL (Sandwich ELISA)

Recommended Dilutions:  
It is recommended that this reagent  
should be titrated in each testing  
system to obtain optimal results.

## Product Information

MP02524-1 targets MMS2 in immunoassays as a matched antibody pair. Validated in Cytometric bead array, Sandwich ELISA.

Capture antibody: UBE2V2 Recombinant monoclonal antibody, PBS Only (Capture) 86551-2-PBS (251485H1). 100 µg. Concentration 1 mg/mL.

Detection antibody: UBE2V2 Recombinant monoclonal antibody, PBS Only (Detector) 86551-1-PBS (251485F1). 100 µg. Concentration 1 mg/mL.

Unconjugated rabbit recombinant monoclonal antibody pair in PBS only storage buffer at a concentration of 1 mg/mL, ready for conjugation. Created using Proteintech's proprietary in-house recombinant technology. Recombinant production enables unrivalled batch-to-batch consistency, easy scale-up, and future security of supply.

Matched antibody pairs are designed for use in a variety of assays and platforms that require matched antibody pairs.

Antibody use should be optimized for each application and assay.

## Storage

Storage:  
Store at -80°C.  
Storage buffer:  
PBS only

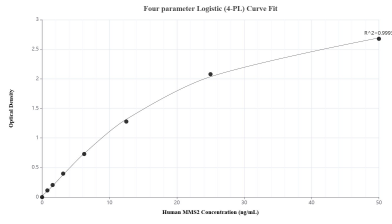
For technical support and original validation data for this product please contact:

T: 1 (888) 4PTGLAB (1-888-478-4522) (toll free  
in USA), or 1(312) 455-8498 (outside USA)

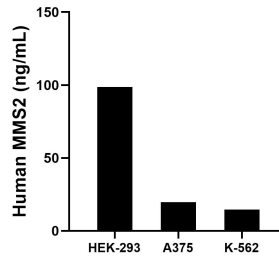
E: [proteintech@ptglab.com](mailto:proteintech@ptglab.com)  
W: [ptglab.com](http://ptglab.com)

This product is exclusively available under Proteintech Group brand and is not available to purchase from any other manufacturer.

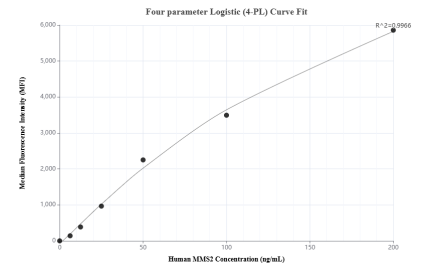
## Selected Validation Data



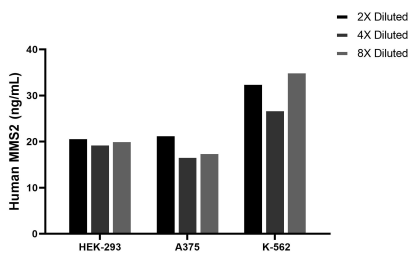
Sandwich ELISA standard curve of MP02524-1, Human MMS2 Recombinant Matched Antibody Pair - PBS only. 86551-2-PBS was coated to a plate as the capture antibody and incubated with serial dilutions of standard Ag1111. 86551-1-PBS was HRP conjugated as the detection antibody. Range: 0.781-50 ng/mL



The mean MMS2 concentration was determined to be 98.67 ng/mL in HEK-293 cell extract based on a 1.20 mg/mL extract load, 19.79 ng/mL in A375 cell extract based on a 1.60 mg/mL extract load and 14.71 ng/mL in K-562 cell extract based on a 1.20 mg/mL extract load.



Cytometric bead array standard curve of MP02524-1, MMS2 Recombinant Matched Antibody Pair, PBS Only. Capture antibody: 86551-2-PBS. Detection antibody: 86551-1-PBS. Standard: Ag1111. Range: 6.25-200 ng/mL



The mean MMS2 concentration was determined to be 20.3 ng/mL in HEK-293 cell extract based on a 1.1 mg/mL extract load, 18.8 ng/mL in A375 cell extract based on a 1.6 mg/mL extract load, 31.7 ng/mL in K-562 cell extract based on a 1.2 mg/mL extract load.