

For Research Use Only

KYNU Recombinant Matched Antibody Pair, PBS Only



Catalog Number:MP02527-1

Capture Antibody Information

Catalog Number:
86555-2-PBS
Host:
Rabbit
Isotype:
IgG
Purification Method:
Protein A purification

Clone ID:
251437B3
Reactivity:
human
Immunogen Catalog Number:
Ag2365

Conjugate:
Unconjugated
Full name:
kynureninase (L-kynurenine hydrolase)
Gene ID:
8942

Detection Antibody Information

Catalog Number:
86555-1-PBS
Host:
Rabbit
Isotype:
IgG
Purification Method:
Protein A purification

Clone ID:
251437G10
Reactivity:
human
GenBank:
BC000879
Immunogen Catalog Number:
Ag2365

Conjugate:
Unconjugated
Full name:
kynureninase (L-kynurenine hydrolase)
Gene ID:
8942

Applications

Tested Applications:
Cytometric bead array

Range:
3.125-200 ng/mL (Cytometric Bead Array)

Recommended Dilutions:
It is recommended that this reagent should be titrated in each testing system to obtain optimal results.

Product Information

MP02527-1 targets KYNU in immunoassays as a matched antibody pair. Validated in Cytometric bead array.

Capture antibody: KYNU Recombinant monoclonal antibody, PBS Only (Capture) 86555-2-PBS (251437B3). 100 µg. Concentration 1 mg/mL.

Detection antibody: KYNU Recombinant monoclonal antibody, PBS Only 86555-1-PBS (251437G10). 100 µg. Concentration 1 mg/mL.

Unconjugated rabbit recombinant monoclonal antibody pair in PBS only storage buffer at a concentration of 1 mg/mL, ready for conjugation. Created using Proteintech's proprietary in-house recombinant technology. Recombinant production enables unrivalled batch-to-batch consistency, easy scale-up, and future security of supply.

Matched antibody pairs are designed for use in a variety of assays and platforms that require matched antibody pairs.

Antibody use should be optimized for each application and assay.

Storage

Storage:
Store at -80°C.
Storage buffer:
PBS only

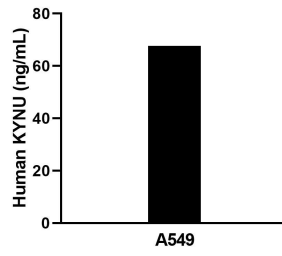
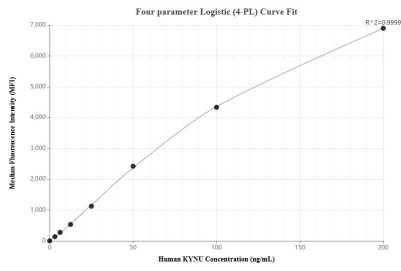
For technical support and original validation data for this product please contact:

T: 1 (888) 4PTGLAB (1-888-478-4522) (toll free in USA), or 1(312) 455-8498 (outside USA)

E: proteintech@ptglab.com
W: ptglab.com

This product is exclusively available under Proteintech Group brand and is not available to purchase from any other manufacturer.

Selected Validation Data



Cytometric bead array standard curve of MP02527-1, KYNU Recombinant Matched Antibody Pair, PBS Only. Capture antibody: 86555-2-PBS. Detection antibody: 86555-1-PBS. Standard: Ag2365. Range: 3.125-200 ng/mL.

The mean KYNU concentration was determined to be 68.5 ng/mL in A549 cell extract based on a 1.2 mg/mL extract load.