

Mouse PON3 Recombinant Matched Antibody Pair, PBS Only

Catalog Number: **MP02543-1**

Capture Antibody Information

Catalog Number:
86577-2-PBS
Host:
Rabbit
Isotype:
IgG
Purification Method:
Protein A purification

Clone ID:
251535A2
Reactivity:
mouse
Immunogen Catalog Number:
Eg2743

Conjugate:
Unconjugated
Full name:
paraoxonase 3
Gene ID:
269823

Detection Antibody Information

Catalog Number:
86577-1-PBS
Host:
Rabbit
Isotype:
IgG
Purification Method:
Protein A purification

Clone ID:
251535H2
Reactivity:
mouse, rat
GenBank:
NM_173006.1
Immunogen Catalog Number:
Eg2743

Conjugate:
Unconjugated
Full name:
paraoxonase 3
Gene ID:
269823

Applications

Tested Applications:
Cytometric bead array, Sandwich ELISA

Range:
0.469-60 ng/mL (Cytometric Bead Array)
39.1-2500 pg/mL (Sandwich ELISA)

Recommended Dilutions:
It is recommended that this reagent should be titrated in each testing system to obtain optimal results.

Product Information

MP02543-1 targets PON3 in immunoassays as a matched antibody pair. Validated in Cytometric bead array, Sandwich ELISA.

Capture antibody: Mouse Pon3 Recombinant monoclonal antibody, PBS Only (Capture) 86577-2-PBS (251535A2). 100 µg. Concentration 1 mg/mL.

Detection antibody: Mouse Pon3 Recombinant monoclonal antibody, PBS Only (Detector) 86577-1-PBS (251535H2). 100 µg. Concentration 1 mg/mL.

Unconjugated rabbit recombinant monoclonal antibody pair in PBS only storage buffer at a concentration of 1 mg/mL, ready for conjugation. Created using Proteintech's proprietary in-house recombinant technology. Recombinant production enables unrivalled batch-to-batch consistency, easy scale-up, and future security of supply.

Matched antibody pairs are designed for use in a variety of assays and platforms that require matched antibody pairs.

Antibody use should be optimized for each application and assay.

Storage

Storage:
Store at -80°C.
Storage buffer:
PBS only

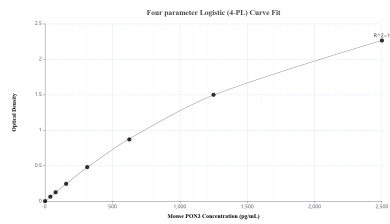
For technical support and original validation data for this product please contact:

T: 1 (888) 4PTGLAB (1-888-478-4522) (toll free in USA), or 1(312) 455-8498 (outside USA)

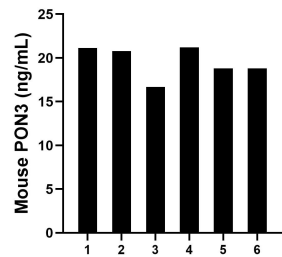
E: proteintech@ptglab.com
W: ptglab.com

This product is exclusively available under Proteintech Group brand and is not available to purchase from any other manufacturer.

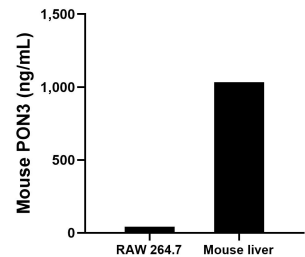
Selected Validation Data



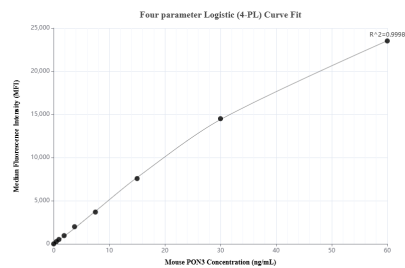
Sandwich ELISA standard curve of MP02543-1, Mouse PON3 Recombinant Matched Antibody Pair - PBS only. 86577-2-PBS was coated to a plate as the capture antibody and incubated with serial dilutions of standard Eg2743. 86577-1-PBS was HRP conjugated as the detection antibody. Range: 39.1-2500 pg/mL



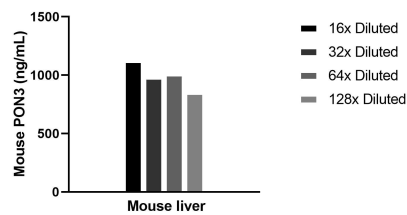
Serum of six mice was measured. The PON3 concentration of detected samples was determined to be 19.6 ng/mL with a range of 16.7-21.2 ng/mL.



The mean PON3 concentration was determined to be 41.6 ng/mL in RAW 264.7 cell extract based on a 1.3 mg/mL extract load and 1,033.8 ng/mL in mouse liver tissue extract based on a 8.4 mg/mL extract load.



Cytometric bead array standard curve of MP02543-1, MOUSE PON3 Recombinant Matched Antibody Pair, PBS Only. Capture antibody: 86577-2-PBS. Detection antibody: 86577-1-PBS. Standard: Eg2743. Range: 0.469-60 ng/mL



The mean PON3 concentration was determined to be 986.3 ng/mL in Mouse liver tissue extract based on a 8.4 mg/mL extract load.