

PRDX6 Recombinant Matched Antibody Pair, PBS Only

Catalog Number: **MP02551-1**

Capture Antibody Information

Catalog Number:
86368-1-PBS

Host:
Rabbit

Isotype:
IgG

Purification Method:
Protein A purification

Clone ID:
251053E8

Reactivity:
human, mouse, rat

Immunogen Catalog Number:
Ag4512

Conjugate:
Unconjugated

Full name:
peroxiredoxin 6

Gene ID:
9588

Detection Antibody Information

Catalog Number:
86368-3-PBS

Host:
Rabbit

Isotype:
IgG

Purification Method:
Protein A purification

Clone ID:
251053G9

Reactivity:
human

GenBank:
BC035857

Immunogen Catalog Number:
Ag4512

Conjugate:
Unconjugated

Full name:
peroxiredoxin 6

Gene ID:
9588

Applications

Tested Applications:
Sandwich ELISA

Range:
0.156-10 ng/mL (Sandwich ELISA)

Recommended Dilutions:
It is recommended that this reagent should be titrated in each testing system to obtain optimal results.

Product Information

MP02551-1 targets PRDX6 in immunoassays as a matched antibody pair. Validated in Sandwich ELISA.

Capture antibody: PRDX6 Recombinant monoclonal antibody, PBS Only (Capture) 86368-1-PBS (251053E8). 100 µg. Concentration 1 mg/mL.

Detection antibody: PRDX6 Recombinant monoclonal antibody, PBS Only (Detector) 86368-3-PBS (251053G9). 100 µg. Concentration 1 mg/mL.

Unconjugated rabbit recombinant monoclonal antibody pair in PBS only storage buffer at a concentration of 1 mg/mL, ready for conjugation. Created using Proteintech's proprietary in-house recombinant technology. Recombinant production enables unrivalled batch-to-batch consistency, easy scale-up, and future security of supply.

Matched antibody pairs are designed for use in a variety of assays and platforms that require matched antibody pairs.

Antibody use should be optimized for each application and assay.

Storage

Storage:
Store at -80°C.
Storage buffer:
PBS only

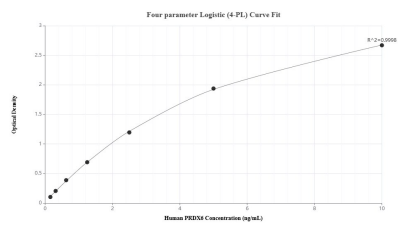
For technical support and original validation data for this product please contact:

T: 1 (888) 4PTGLAB (1-888-478-4522) (toll free in USA), or 1(312) 455-8498 (outside USA)

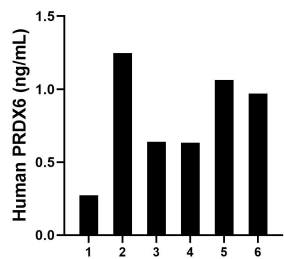
E: proteintech@ptglab.com
W: ptglab.com

This product is exclusively available under Proteintech Group brand and is not available to purchase from any other manufacturer.

Selected Validation Data



Sandwich ELISA standard curve of MP02551-1, Human PRDX6 Recombinant Matched Antibody Pair - PBS only. 86368-1-PBS was coated to a plate as the capture antibody and incubated with serial dilutions of standard Ag4512. 86368-3-PBS was HRP conjugated as the detection antibody. Range: 0.156-10 ng/mL



Plasma of six individual healthy human donors was measured. The human PRDX6 concentration of detected samples was determined to be 0.80 ng/mL with a range of 0.27 - 1.25 ng/mL