

For Research Use Only

# CUEDC2 Recombinant Matched Antibody Pair, PBS Only



Catalog Number:MP02553-1

## Capture Antibody Information

Catalog Number:

86610-1-PBS

Host:

Rabbit

Isotype:

IgG

Purification Method:

Protein A purification

Clone ID:

251583H5

Reactivity:

human

Immunogen Catalog Number:

Ag13847

Conjugate:

Unconjugated

Full name:

CUE domain containing 2

Gene ID:

79004

## Detection Antibody Information

Catalog Number:

86610-2-PBS

Host:

Rabbit

Isotype:

IgG

Purification Method:

Protein A purification

Clone ID:

251583E6

Reactivity:

human

GenBank:

BC000262

Immunogen Catalog Number:

Ag13847

Conjugate:

Unconjugated

Full name:

CUE domain containing 2

Gene ID:

79004

## Applications

Tested Applications:

Cytometric bead array

Range:

0.625-40 ng/mL (Cytometric Bead Array)

Recommended Dilutions:

It is recommended that this reagent should be titrated in each testing system to obtain optimal results.

## Product Information

MP02553-1 targets CUEDC2 in immunoassays as a matched antibody pair. Validated in Cytometric bead array.

Capture antibody: CUEDC2 Recombinant antibody, PBS Only (Capture) 86610-1-PBS (251583H5). 100 µg. Concentration 1 mg/mL.

Detection antibody: CUEDC2 Recombinant antibody, PBS Only (Detector) 86610-2-PBS (251583E6). 100 µg. Concentration 1 mg/mL.

Unconjugated rabbit recombinant monoclonal antibody pair in PBS only storage buffer at a concentration of 1 mg/mL, ready for conjugation. Created using Proteintech's proprietary in-house recombinant technology. Recombinant production enables unrivalled batch-to-batch consistency, easy scale-up, and future security of supply.

Matched antibody pairs are designed for use in a variety of assays and platforms that require matched antibody pairs.

Antibody use should be optimized for each application and assay.

## Storage

Storage:

Store at -80°C.

Storage buffer:

PBS only

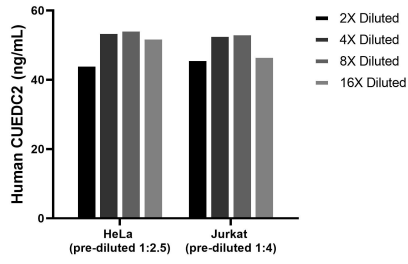
For technical support and original validation data for this product please contact:

T: 1 (888) 4PTGLAB (1-888-478-4522) (toll free in USA), or 1(312) 455-8498 (outside USA)

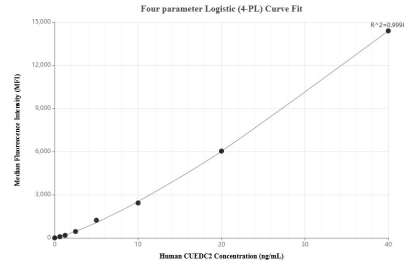
E: [proteintech@ptglab.com](mailto:proteintech@ptglab.com)  
W: [ptglab.com](http://ptglab.com)

This product is exclusively available under Proteintech Group brand and is not available to purchase from any other manufacturer.

## Selected Validation Data



The mean CUEDC2 concentration was determined to be 51.3 ng/mL in HeLa cell extract based on a 1.1 mg/mL extract load, 49.9 ng/mL in Jurkat cell extract based on a 1.2 mg/mL extract load.



Cytometric bead array standard curve of MP02553-1, CUEDC2 Recombinant Matched Antibody Pair, PBS Only. Capture antibody: 86610-1-PBS. Detection antibody: 86610-2-PBS. Standard: Ag13847. Range: 0.625-40 ng/mL.