

For Research Use Only

# RNASE1 Recombinant Matched Antibody Pair, PBS Only



Catalog Number:MP02554-1

## Capture Antibody Information

**Catalog Number:**  
86606-1-PBS  
**Host:**  
Rabbit  
**Isotype:**  
IgG  
**Purification Method:**  
Protein A purification

**Clone ID:**  
251017C12  
**Reactivity:**  
human  
**Immunogen Catalog Number:**  
Eg3044

**Conjugate:**  
Unconjugated  
**Full name:**  
ribonuclease, RNase A family, 1 (pancreatic)  
**Gene ID:**  
6035

## Detection Antibody Information

**Catalog Number:**  
86606-2-PBS  
**Host:**  
Rabbit  
**Isotype:**  
IgG  
**Purification Method:**  
Protein A purification

**Clone ID:**  
251017H3  
**Reactivity:**  
human  
**GenBank:**  
NM\_002933.5  
**Immunogen Catalog Number:**  
Eg3044

**Conjugate:**  
Unconjugated  
**Full name:**  
ribonuclease, RNase A family, 1 (pancreatic)  
**Gene ID:**  
6035

## Applications

**Tested Applications:**  
Sandwich ELISA

**Range:**  
19.5-1250 pg/mL (Sandwich ELISA)

**Recommended Dilutions:**  
It is recommended that this reagent should be titrated in each testing system to obtain optimal results.

## Product Information

MP02554-1 targets RNASE1 in immunoassays as a matched antibody pair. Validated in Sandwich ELISA.

Capture antibody: RNASE1 Recombinant antibody, PBS Only (Capture) 86606-1-PBS (251017C12). 100 µg. Concentration 1 mg/mL.

Detection antibody: RNASE1 Recombinant antibody, PBS Only (Detector) 86606-2-PBS (251017H3). 100 µg. Concentration 1 mg/mL.

Unconjugated rabbit recombinant monoclonal antibody pair in PBS only storage buffer at a concentration of 1 mg/mL, ready for conjugation. Created using Proteintech's proprietary in-house recombinant technology. Recombinant production enables unrivalled batch-to-batch consistency, easy scale-up, and future security of supply.

Matched antibody pairs are designed for use in a variety of assays and platforms that require matched antibody pairs.

Antibody use should be optimized for each application and assay.

## Storage

**Storage:**  
Store at -80°C.  
**Storage buffer:**  
PBS only

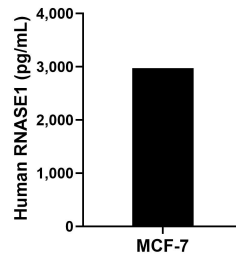
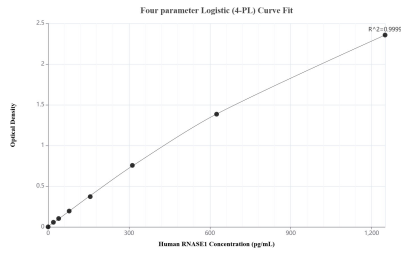
For technical support and original validation data for this product please contact:

T: 1 (888) 4PTGLAB (1-888-478-4522) (toll free in USA), or 1(312) 455-8498 (outside USA)

E: [proteintech@ptglab.com](mailto:proteintech@ptglab.com)  
W: [ptglab.com](http://ptglab.com)

**This product is exclusively available under Proteintech Group brand and is not available to purchase from any other manufacturer.**

## Selected Validation Data



Sandwich ELISA standard curve of MP02554-1, Human RNASE1 Recombinant Matched Antibody Pair - PBS only. 86606-1-PBS was coated to a plate as the capture antibody and incubated with serial dilutions of standard Eg3044. 86606-2-PBS was HRP conjugated as the detection antibody. Range: 19.5-1250 pg/mL

The mean RNASE1 concentration was determined to be 2,974.4 pg/mL in MCF-7 cell extract based on a 1.3 mg/mL extract load.