

For Research Use Only



# G-CSF Recombinant Matched Antibody Pair, PBS Only

Catalog Number:MP02556-1

## Capture Antibody Information

Catalog Number:  
86376-1-PBS  
Host:  
Rabbit  
Isotype:  
IgG  
Purification Method:  
Protein A purification

Clone ID:  
250389H1  
Reactivity:  
human  
Immunogen Catalog Number:  
HZ-1207

Conjugate:  
Unconjugated  
Full name:  
colony stimulating factor 3 (granulocyte)  
Gene ID:  
1440

## Detection Antibody Information

Catalog Number:  
86376-2-PBS  
Host:  
Rabbit  
Isotype:  
IgG  
Purification Method:  
Protein A purification

Clone ID:  
250389A8  
Reactivity:  
human  
GenBank:  
Immunogen Catalog Number:  
HZ-1207

Conjugate:  
Unconjugated  
Full name:  
colony stimulating factor 3 (granulocyte)  
Gene ID:  
1440

## Applications

Tested Applications:  
Sandwich ELISA

Range:  
19.5-1250 pg/mL (Sandwich ELISA)

Recommended Dilutions:  
It is recommended that this reagent should be titrated in each testing system to obtain optimal results.

## Product Information

MP02556-1 targets G-CSF in immunoassays as a matched antibody pair. Validated in Sandwich ELISA.

Capture antibody: G-CSF Recombinant antibody, PBS Only (Capture) 86376-1-PBS (250389H1). 100 µg. Concentration 1 mg/mL.

Detection antibody: G-CSF Recombinant antibody, PBS Only (Detector) 86376-2-PBS (250389A8). 100 µg. Concentration 1 mg/mL.

Unconjugated rabbit recombinant monoclonal antibody pair in PBS only storage buffer at a concentration of 1 mg/mL, ready for conjugation. Created using Proteintech's proprietary in-house recombinant technology. Recombinant production enables unrivalled batch-to-batch consistency, easy scale-up, and future security of supply.

Matched antibody pairs are designed for use in a variety of assays and platforms that require matched antibody pairs.

Antibody use should be optimized for each application and assay.

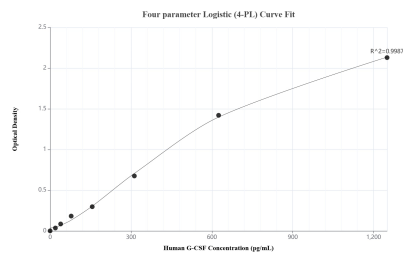
## Storage

Storage:  
Store at -80°C.  
Storage buffer:  
PBS only

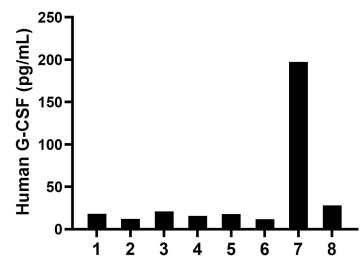
For technical support and original validation data for this product please contact:  
T: 1 (888) 4PTGLAB (1-888-478-4522) (toll free in USA), or 1(312) 455-8498 (outside USA)  
E: [proteintech@ptglab.com](mailto:proteintech@ptglab.com)  
W: [ptglab.com](http://ptglab.com)

This product is exclusively available under Proteintech Group brand and is not available to purchase from any other manufacturer.

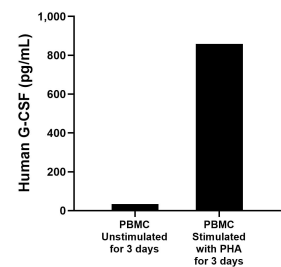
## Selected Validation Data



Sandwich ELISA standard curve of MP02556-1, Human G-CSF Recombinant Matched Antibody Pair - PBS only. 86376-1-PBS was coated to a plate as the capture antibody and incubated with serial dilutions of standard HZ-1207. 86376-2-PBS was HRP conjugated as the detection antibody. Range: 19.5-1250 pg/mL



Serum of eight individual healthy human donors was measured. The G-CSF concentration of detected samples was determined to be 40.3 pg/mL with a range of 11.8-197.6 pg/mL



Human peripheral blood mononuclear cells (PBMC) were cultured unstimulated or stimulated with 10 µg/mL PHA for 3 days. The mean G-CSF concentration was determined to be 33.9 pg/mL in unstimulated PBMC supernatant, 858.2 pg/mL in PHA stimulated PBMC supernatant.