

For Research Use Only

# Mouse MASP1 Recombinant Matched Antibody Pair, PBS Only



Catalog Number:MP02560-1

## Capture Antibody Information

**Catalog Number:**  
86615-1-PBS  
**Host:**  
Rabbit  
**Isotype:**  
IgG  
**Purification Method:**  
Protein A purification

**Clone ID:**  
251559H7  
**Reactivity:**  
mouse  
**Immunogen Catalog Number:**  
Eg4420

**Conjugate:**  
Unconjugated  
**Full name:**  
mannan-binding lectin serine peptidase 1  
**Gene ID:**  
17174

## Detection Antibody Information

**Catalog Number:**  
86615-2-PBS  
**Host:**  
Rabbit  
**Isotype:**  
IgG  
**Purification Method:**  
Protein A purification

**Clone ID:**  
251559F3  
**Reactivity:**  
mouse  
**GenBank:**  
NM\_008555.2  
**Immunogen Catalog Number:**  
Eg4420

**Conjugate:**  
Unconjugated  
**Full name:**  
mannan-binding lectin serine peptidase 1  
**Gene ID:**  
17174

## Applications

**Tested Applications:**  
Cytometric bead array, Sandwich ELISA

**Range:**  
0.312-40 ng/mL (Cytometric Bead Array)  
39.1-2500 pg/mL (Sandwich ELISA)

**Recommended Dilutions:**  
It is recommended that this reagent should be titrated in each testing system to obtain optimal results.

## Product Information

MP02560-1 targets MASP1 in immunoassays as a matched antibody pair. Validated in Cytometric bead array, Sandwich ELISA.

Capture antibody: Mouse MASP1 Recombinant monoclonal antibody, PBS Only (Capture) 86615-1-PBS (251559H7). 100 µg. Concentration 1 mg/mL.

Detection antibody: Mouse MASP1 Recombinant monoclonal antibody, PBS Only (Detector) 86615-2-PBS (251559F3). 100 µg. Concentration 1 mg/mL.

Unconjugated rabbit recombinant monoclonal antibody pair in PBS only storage buffer at a concentration of 1 mg/mL, ready for conjugation. Created using Proteintech's proprietary in-house recombinant technology. Recombinant production enables unrivalled batch-to-batch consistency, easy scale-up, and future security of supply.

Matched antibody pairs are designed for use in a variety of assays and platforms that require matched antibody pairs.

Antibody use should be optimized for each application and assay.

## Storage

**Storage:**  
Store at -80°C.  
**Storage buffer:**  
PBS only

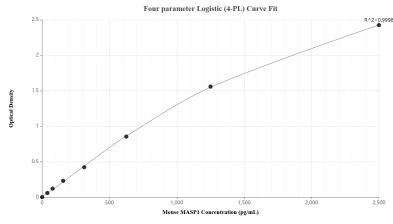
For technical support and original validation data for this product please contact:

T: 1 (888) 4PTGLAB (1-888-478-4522) (toll free in USA), or 1(312) 455-8498 (outside USA)

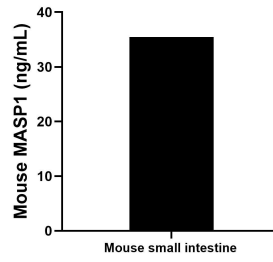
E: [proteintech@ptglab.com](mailto:proteintech@ptglab.com)  
W: [ptglab.com](http://ptglab.com)

This product is exclusively available under Proteintech Group brand and is not available to purchase from any other manufacturer.

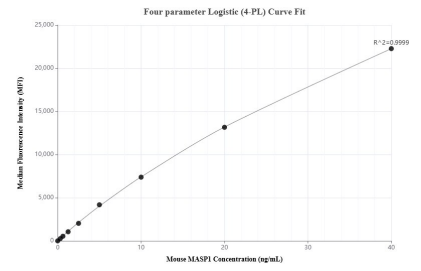
## Selected Validation Data



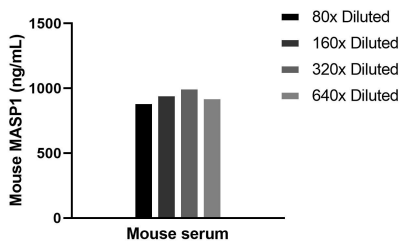
Sandwich ELISA standard curve of MP02560-1, Mouse MASP1 Recombinant Matched Antibody Pair - PBS only. 86615-1-PBS was coated to a plate as the capture antibody and incubated with serial dilutions of standard Eg4420. 86615-2-PBS was HRP conjugated as the detection antibody. Range: 39.1-2500 pg/mL



The mean MASP1 concentration was determined to be 35.5 ng/mL in mouse small intestine tissue extract based on a 4.9 mg/mL extract load.



Cytometric bead array standard curve of MP02560-1, MOUSE MASP1 Recombinant Matched Antibody Pair, PBS Only. Capture antibody: 86615-1-PBS. Detection antibody: 86615-2-PBS. Standard: Eg4420. Range: 0.312-40 ng/mL



The mean MASP1 concentration was determined to be 946.3 ng/mL in mouse serum.