

For Research Use Only



ELAVL2 Recombinant Matched Antibody Pair, PBS Only

Catalog Number:MP02564-1

Capture Antibody Information

Catalog Number:
86623-1-PBS

Host:
Rabbit

Isotype:
IgG

Purification Method:
Protein A purification

Clone ID:
251573C7

Reactivity:
human

Immunogen Catalog Number:
Ag5105

Conjugate:
Unconjugated

Full name:
ELAV (embryonic lethal, abnormal vision, Drosophila)-like 2 (Hu antigen B)

Gene ID:
1993

Detection Antibody Information

Catalog Number:
86623-2-PBS

Host:
Rabbit

Isotype:
IgG

Purification Method:
Protein A purification

Clone ID:
251573G9

Reactivity:
human

GenBank:
BC030692

Immunogen Catalog Number:
Ag5105

Conjugate:
Unconjugated

Full name:
ELAV (embryonic lethal, abnormal vision, Drosophila)-like 2 (Hu antigen B)

Gene ID:
1993

Applications

Tested Applications:
Cytometric bead array

Range:
0.312-40 ng/mL (Cytometric Bead Array)

Recommended Dilutions:
It is recommended that this reagent should be titrated in each testing system to obtain optimal results.

Product Information

MP02564-1 targets ELAVL2 in immunoassays as a matched antibody pair. Validated in Cytometric bead array.

Capture antibody: ELAVL2 Recombinant antibody, PBS Only (Capture) 86623-1-PBS (251573C7). 100 µg. Concentration 1 mg/mL.

Detection antibody: ELAVL2 Recombinant antibody, PBS Only (Detector) 86623-2-PBS (251573G9). 100 µg. Concentration 1 mg/mL.

Unconjugated rabbit recombinant monoclonal antibody pair in PBS only storage buffer at a concentration of 1 mg/mL, ready for conjugation. Created using Proteintech's proprietary in-house recombinant technology. Recombinant production enables unrivalled batch-to-batch consistency, easy scale-up, and future security of supply.

Matched antibody pairs are designed for use in a variety of assays and platforms that require matched antibody pairs.

Antibody use should be optimized for each application and assay.

Storage

Storage:
Store at -80°C.
Storage buffer:
PBS only

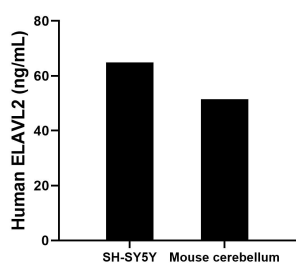
For technical support and original validation data for this product please contact:

T: 1 (888) 4PTGLAB (1-888-478-4522) (toll free in USA), or 1(312) 455-8498 (outside USA)

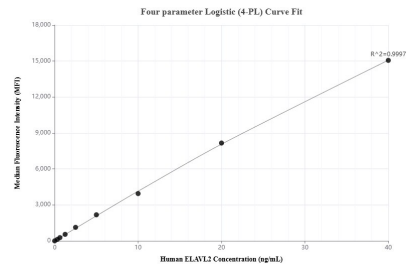
E: proteintech@ptglab.com
W: ptglab.com

This product is exclusively available under Proteintech Group brand and is not available to purchase from any other manufacturer.

Selected Validation Data



The mean ELAVL2 concentration was determined to be 64.9 ng/mL in SH-SY5Y cell extract based on a 1.0 mg/mL extract load, 51.5 ng/mL in mouse cerebellum tissue extract based on a 2.9 mg/mL extract load.



Cytometric bead array standard curve of MP02564-1, ELAVL2 Recombinant Matched Antibody Pair, PBS Only. Capture antibody: 86623-1-PBS. Detection antibody: 86623-2-PBS. Standard: Ag5105. Range: 0.312-40 ng/mL.