

CD13 Recombinant Matched Antibody Pair, PBS Only

Catalog Number: MP02566-1

Capture Antibody Information

Catalog Number:
86620-1-PBS
Host:
Rabbit
Isotype:
IgG
Purification Method:
Protein A purification

Clone ID:
251501G9
Reactivity:
human
Immunogen Catalog Number:
Eg3748

Conjugate:
Unconjugated
Full name:
alanyl (membrane) aminopeptidase
Gene ID:
290

Detection Antibody Information

Catalog Number:
86620-2-PBS
Host:
Rabbit
Isotype:
IgG
Purification Method:
Protein A purification

Clone ID:
251501H7
Reactivity:
human
GenBank:
BC058928
Immunogen Catalog Number:
Eg3748

Conjugate:
Unconjugated
Full name:
alanyl (membrane) aminopeptidase
Gene ID:
290

Applications

Tested Applications:
Cytometric bead array

Range:
0.625-80 ng/mL (Cytometric Bead Array)

Recommended Dilutions:
It is recommended that this reagent should be titrated in each testing system to obtain optimal results.

Product Information

MP02566-1 targets CD13 in immunoassays as a matched antibody pair. Validated in Cytometric bead array.

Capture antibody: CD13 Recombinant antibody, PBS Only (Capture) 86620-1-PBS (251501G9). 100 µg. Concentration 1 mg/mL.

Detection antibody: CD13 Recombinant antibody, PBS Only (Detector) 86620-2-PBS (251501H7). 100 µg. Concentration 1 mg/mL.

Unconjugated rabbit recombinant monoclonal antibody pair in PBS only storage buffer at a concentration of 1 mg/mL, ready for conjugation. Created using Proteintech's proprietary in-house recombinant technology. Recombinant production enables unrivalled batch-to-batch consistency, easy scale-up, and future security of supply.

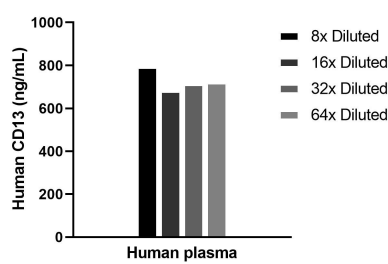
Matched antibody pairs are designed for use in a variety of assays and platforms that require matched antibody pairs.

Antibody use should be optimized for each application and assay.

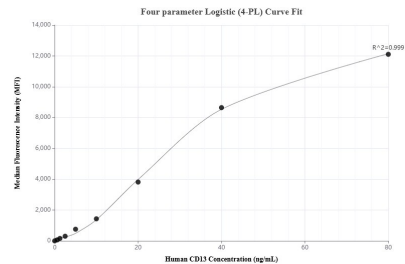
Storage

Storage:
Store at -80°C.
Storage buffer:
PBS only

Selected Validation Data



The mean CD13 concentration was determined to be 726.6 ng/mL in human plasma.



Cytometric bead array standard curve of MP02566-1, CD13 Recombinant Matched Antibody Pair, PBS Only. Capture antibody: 86620-1-PBS. Detection antibody: 86620-2-PBS. Standard: Eg3748. Range: 0.625-80 ng/mL.