

For Research Use Only

Draxin Recombinant Matched Antibody Pair, PBS Only



Catalog Number:MP02569-1

Capture Antibody Information

Catalog Number:
86244-2-PBS

Host:
Rabbit

Isotype:
IgG

Purification Method:
Protein A purification

Clone ID:
250677C11

Reactivity:
human

Immunogen Catalog Number:
Eg4203

Conjugate:
Unconjugated

Full name:
chromosome 1 open reading frame
187

Gene ID:
374946

Detection Antibody Information

Catalog Number:
86244-3-PBS

Host:
Rabbit

Isotype:
IgG

Purification Method:
Protein A purification

Clone ID:
250677H5

Reactivity:
human

GenBank:
NM_198545.3

Immunogen Catalog Number:
Eg4203

Conjugate:
Unconjugated

Full name:
chromosome 1 open reading frame
187

Gene ID:
374946

Applications

Tested Applications:
Sandwich ELISA

Range:
0.781-50 ng/mL (Sandwich ELISA)

Recommended Dilutions:
It is recommended that this reagent should be titrated in each testing system to obtain optimal results.

Product Information

MP02569-1 targets Draxin in immunoassays as a matched antibody pair. Validated in Sandwich ELISA.

Capture antibody: Draxin Recombinant antibody, PBS Only (Capture) 86244-2-PBS (250677C11). 100 µg. Concentration 1 mg/mL.

Detection antibody: Draxin Recombinant antibody, PBS Only (Detector) 86244-3-PBS (250677H5). 100 µg. Concentration 1 mg/mL.

Unconjugated rabbit recombinant monoclonal antibody pair in PBS only storage buffer at a concentration of 1 mg/mL, ready for conjugation. Created using Proteintech's proprietary in-house recombinant technology. Recombinant production enables unrivalled batch-to-batch consistency, easy scale-up, and future security of supply.

Matched antibody pairs are designed for use in a variety of assays and platforms that require matched antibody pairs.

Antibody use should be optimized for each application and assay.

Storage

Storage:
Store at -80°C.
Storage buffer:
PBS only

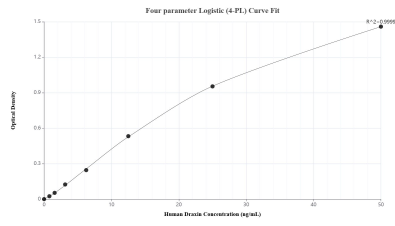
For technical support and original validation data for this product please contact:

T: 1 (888) 4PTGLAB (1-888-478-4522) (toll free in USA), or 1(312) 455-8498 (outside USA)

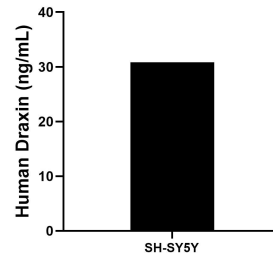
E: proteintech@ptglab.com
W: ptglab.com

This product is exclusively available under Proteintech Group brand and is not available to purchase from any other manufacturer.

Selected Validation Data



Sandwich ELISA standard curve of MP02569-1, Human Draxin Recombinant Matched Antibody Pair - PBS only. 86244-2-PBS was coated to a plate as the capture antibody and incubated with serial dilutions of standard Eg4203. 86244-3-PBS was HRP conjugated as the detection antibody. Range: 0.781-50 ng/mL.



The mean Draxin concentration was determined to be 30.83 ng/mL in SH-SY5Y cell extract based on a 1.40 mg/mL extract load.