

# Calpastatin Recombinant Matched Antibody Pair, PBS Only

Catalog Number: **MP02574-1**

## Capture Antibody Information

**Catalog Number:**

86664-2-PBS

**Host:**

Rabbit

**Isotype:**

IgG

**Purification Method:**

Protein A purification

**Clone ID:**

251652C2

**Reactivity:**

human

**Immunogen Catalog Number:**

Ag2897

**Conjugate:**

Unconjugated

**Full name:**

calpastatin

**Gene ID:**

831

## Detection Antibody Information

**Catalog Number:**

86664-1-PBS

**Host:**

Rabbit

**Isotype:**

IgG

**Purification Method:**

Protein A purification

**Clone ID:**

251652F12

**Reactivity:**

human

**GenBank:**

BC013579

**Immunogen Catalog Number:**

Ag2897

**Conjugate:**

Unconjugated

**Full name:**

calpastatin

**Gene ID:**

831

## Applications

**Tested Applications:**

Cytometric bead array

**Range:**

1.25-80 ng/mL (Cytometric Bead Array)

**Recommended Dilutions:**

It is recommended that this reagent should be titrated in each testing system to obtain optimal results.

## Product Information

MP02574-1 targets Calpastatin in immunoassays as a matched antibody pair. Validated in Cytometric bead array.

Capture antibody: CAST Recombinant antibody, PBS Only (Capture) 86664-2-PBS (251652C2). 100 µg. Concentration 1 mg/mL.

Detection antibody: CAST Recombinant antibody, PBS Only (Detector) 86664-1-PBS (251652F12). 100 µg. Concentration 1 mg/mL.

Unconjugated rabbit recombinant monoclonal antibody pair in PBS only storage buffer at a concentration of 1 mg/mL, ready for conjugation. Created using Proteintech's proprietary in-house recombinant technology. Recombinant production enables unrivalled batch-to-batch consistency, easy scale-up, and future security of supply.

Matched antibody pairs are designed for use in a variety of assays and platforms that require matched antibody pairs.

Antibody use should be optimized for each application and assay.

## Storage

**Storage:**

Store at -80°C.

**Storage buffer:**

PBS only

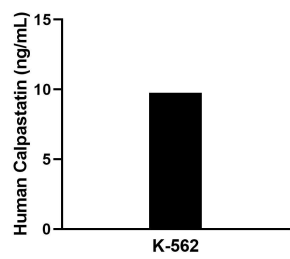
For technical support and original validation data for this product please contact:

T: 1 (888) 4PTGLAB (1-888-478-4522) (toll free in USA), or 1(312) 455-8498 (outside USA)

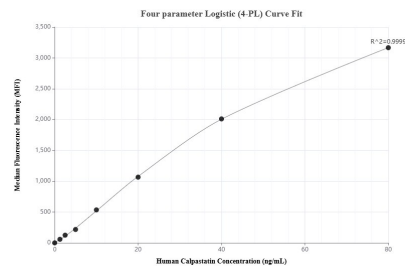
E: [proteintech@ptglab.com](mailto:proteintech@ptglab.com)  
W: [ptglab.com](http://ptglab.com)

**This product is exclusively available under Proteintech Group brand and is not available to purchase from any other manufacturer.**

## Selected Validation Data



The mean Calpastatin concentration was determined to be 9.9 ng/mL in K-562 cell extract based on a 1.2 mg/mL extract load.



Cytometric bead array standard curve of MP02574-1, Calpastatin Recombinant Matched Antibody Pair, PBS Only. Capture antibody: 86664-2-PBS. Detection antibody: 86664-1-PBS. Standard: Ag2897. Range: 1.25-80 ng/mL.