

DDR GK1 Recombinant Matched Antibody Pair, PBS Only

Catalog Number: MP02579-1

Capture Antibody Information

Catalog Number:

86667-2-PBS

Host:

Rabbit

Isotype:

IgG

Purification Method:

Protein A purification

Clone ID:

251582G2

Reactivity:

human, mouse, rat

Immunogen Catalog Number:

Ag13742

Conjugate:

Unconjugated

Full name:

DDR GK domain containing 1

Gene ID:

65992

Detection Antibody Information

Catalog Number:

86667-1-PBS

Host:

Rabbit

Isotype:

IgG

Purification Method:

Protein A purification

Clone ID:

251582B3

Reactivity:

human

GenBank:

BC000643

Immunogen Catalog Number:

Ag13742

Conjugate:

Unconjugated

Full name:

DDR GK domain containing 1

Gene ID:

65992

Applications

Tested Applications:

Cytometric bead array

Range:

0.469-60 ng/mL (Cytometric Bead Array)

Recommended Dilutions:

It is recommended that this reagent should be titrated in each testing system to obtain optimal results.

Product Information

MP02579-1 targets DDR GK1 in immunoassays as a matched antibody pair. Validated in Cytometric bead array.

Capture antibody: DDR GK1 Recombinant monoclonal antibody, PBS Only (Capture) 86667-2-PBS (251582G2). 100 µg. Concentration 1 mg/mL.

Detection antibody: DDR GK1 Recombinant monoclonal antibody, PBS Only (Detector) 86667-1-PBS (251582B3). 100 µg. Concentration 1 mg/mL.

Unconjugated rabbit recombinant monoclonal antibody pair in PBS only storage buffer at a concentration of 1 mg/mL, ready for conjugation. Created using Proteintech's proprietary in-house recombinant technology. Recombinant production enables unrivalled batch-to-batch consistency, easy scale-up, and future security of supply.

Matched antibody pairs are designed for use in a variety of assays and platforms that require matched antibody pairs.

Antibody use should be optimized for each application and assay.

Storage

Storage:

Store at -80°C.

Storage buffer:

PBS only

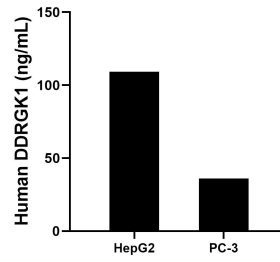
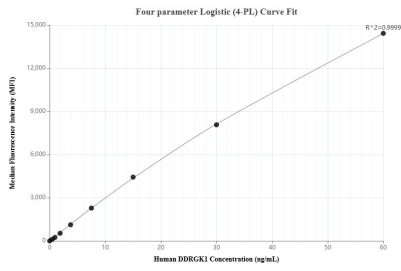
For technical support and original validation data for this product please contact:

T: 1 (888) 4PTGLAB (1-888-478-4522) (toll free in USA), or 1(312) 455-8498 (outside USA)

E: proteintech@ptglab.com
W: ptglab.com

This product is exclusively available under Proteintech Group brand and is not available to purchase from any other manufacturer.

Selected Validation Data



Cytometric bead array standard curve of MP02579-1, DDRGK1 Recombinant Matched Antibody Pair, PBS Only. Capture antibody: 86667-2-PBS. Detection antibody: 86667-1-PBS. Standard: Ag13742. Range: 0.469-60 ng/mL.

The mean DDRGK1 concentration was determined to be 109.2 ng/mL in HepG2 cell extract based on a 1.2 mg/mL extract load, 36.0 ng/mL in PC-3 cell extract based on a 1.3 mg/mL extract load.