

For Research Use Only

RHOB Recombinant Matched Antibody Pair, PBS Only



Catalog Number:MP02581-1

Capture Antibody Information

Catalog Number:
86663-2-PBS

Host:
Rabbit

Isotype:
IgG

Purification Method:
Protein A purification

Clone ID:
251662A5

Reactivity:
human

Immunogen Catalog Number:
Ag5593

Conjugate:
Unconjugated

Full name:
ras homolog gene family, member B

Gene ID:
388

Detection Antibody Information

Catalog Number:
86663-1-PBS

Host:
Rabbit

Isotype:
IgG

Purification Method:
Protein A purification

Clone ID:
251662F3

Reactivity:
human

GenBank:
BC066954

Immunogen Catalog Number:
Ag5593

Conjugate:
Unconjugated

Full name:
ras homolog gene family, member B

Gene ID:
388

Applications

Tested Applications:
Cytometric bead array

Range:
0.781-100 ng/mL (Cytometric Bead Array)

Recommended Dilutions:
It is recommended that this reagent should be titrated in each testing system to obtain optimal results.

Product Information

MP02581-1 targets RHOB in immunoassays as a matched antibody pair. Validated in Cytometric bead array.

Capture antibody: RHOB Recombinant monoclonal antibody, PBS Only (Capture) 86663-2-PBS (251662A5). 100 µg. Concentration 1 mg/mL.

Detection antibody: RHOB Recombinant monoclonal antibody, PBS Only (Detector) 86663-1-PBS (251662F3). 100 µg. Concentration 1 mg/mL.

Unconjugated rabbit recombinant monoclonal antibody pair in PBS only storage buffer at a concentration of 1 mg/mL, ready for conjugation. Created using Proteintech's proprietary in-house recombinant technology. Recombinant production enables unrivalled batch-to-batch consistency, easy scale-up, and future security of supply.

Matched antibody pairs are designed for use in a variety of assays and platforms that require matched antibody pairs.

Antibody use should be optimized for each application and assay.

Storage

Storage:
Store at -80°C.
Storage buffer:
PBS only

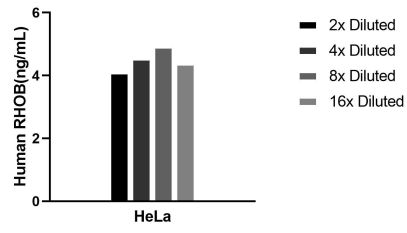
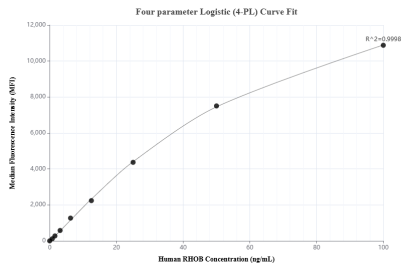
For technical support and original validation data for this product please contact:

T: 1 (888) 4PTGLAB (1-888-478-4522) (toll free in USA), or 1(312) 455-8498 (outside USA)

E: proteintech@ptglab.com
W: ptglab.com

This product is exclusively available under Proteintech Group brand and is not available to purchase from any other manufacturer.

Selected Validation Data



Cytometric bead array standard curve of MP02581-1, RHOB Recombinant Matched Antibody Pair, PBS Only. Capture antibody: 86663-2-PBS. Detection antibody: 86663-1-PBS. Standard: Ag5593. Range: 0.781-100 ng/mL.

The mean RHOB concentration was determined to be 4.5 ng/mL in HeLa cell extract based on a 1.2 mg/mL extract load.