

For Research Use Only

Mouse PTPRZ1 Recombinant Matched Antibody Pair, PBS Only



Catalog Number:MP02599-2

Capture Antibody Information

Catalog Number:
86687-1-PBS
Host:
Rabbit
Isotype:
IgG
Purification Method:
Protein A purification

Clone ID:
251663E4
Reactivity:
mouse
Immunogen Catalog Number:
Eg6825

Conjugate:
Unconjugated
Full name:
protein tyrosine phosphatase,
receptor type Z, polypeptide 1
Gene ID:
19283

Detection Antibody Information

Catalog Number:
86687-3-PBS
Host:
Rabbit
Isotype:
IgG
Purification Method:
Protein A purification

Clone ID:
251663D6
Reactivity:
mouse
GenBank:
NM_001081306.1
Immunogen Catalog Number:
Eg6825

Conjugate:
Unconjugated
Full name:
protein tyrosine phosphatase,
receptor type Z, polypeptide 1
Gene ID:
19283

Applications

Tested Applications:
Sandwich ELISA

Range:
39.1-2500 pg/mL (Sandwich ELISA)

Recommended Dilutions:
It is recommended that this reagent should be titrated in each testing system to obtain optimal results.

Product Information

MP02599-2 targets PTPRZ1 in immunoassays as a matched antibody pair. Validated in Sandwich ELISA.

Capture antibody: Mouse PTPRZ Recombinant monoclonal antibody, PBS Only (Capture) 86687-1-PBS (251663E4). 100 µg. Concentration 1 mg/mL.

Detection antibody: Mouse PTPRZ Recombinant monoclonal antibody, PBS Only (Capture/Detector) 86687-3-PBS (251663D6). 100 µg. Concentration 1 mg/mL.

Unconjugated rabbit recombinant monoclonal antibody pair in PBS only storage buffer at a concentration of 1 mg/mL, ready for conjugation. Created using Proteintech's proprietary in-house recombinant technology. Recombinant production enables unrivalled batch-to-batch consistency, easy scale-up, and future security of supply.

Matched antibody pairs are designed for use in a variety of assays and platforms that require matched antibody pairs.

Antibody use should be optimized for each application and assay.

Storage

Storage:
Store at -80°C.
Storage buffer:
PBS only

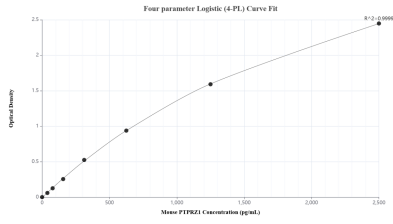
For technical support and original validation data for this product please contact:

T: 1 (888) 4PTGLAB (1-888-478-4522) (toll free in USA), or 1(312) 455-8498 (outside USA)

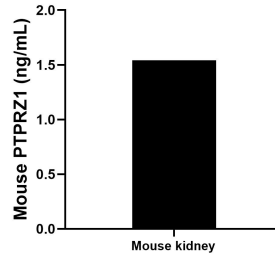
E: proteintech@ptglab.com
W: ptglab.com

This product is exclusively available under Proteintech Group brand and is not available to purchase from any other manufacturer.

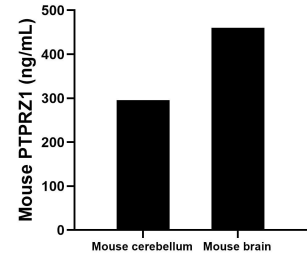
Selected Validation Data



Sandwich ELISA standard curve of MP02599-2, Mouse PTPRZ1 Recombinant Matched Antibody Pair - PBS only. 86687-1-PBS was coated to a plate as the capture antibody and incubated with serial dilutions of standard Eg6825. 86687-3-PBS was HRP conjugated as the detection antibody. Range: 39.1-2500 pg/mL



The mean PTPRZ1 concentration was determined to be 1.5 ng/mL in mouse kidney tissue extract based on a 7.8 mg/mL extract load.



The mean PTPRZ1 concentration was determined to be 295.4 ng/mL in mouse cerebellum tissue extract based on a 2.9 mg/mL extract load and 460.1 ng/mL in mouse brain tissue extract based on a 3.2 mg/mL extract load.