

For Research Use Only

C5 Recombinant Matched Antibody Pair, PBS Only



Catalog Number:MP02611-1

Capture Antibody Information

Catalog Number:

86463-3-PBS

Host:

Rabbit

Isotype:

IgG

Purification Method:

Protein A purification

Clone ID:

251190F8

Reactivity:

human

Immunogen Catalog Number:

Eg4205

Conjugate:

Unconjugated

Full name:

complement component 5

Gene ID:

727

Detection Antibody Information

Catalog Number:

86463-2-PBS

Host:

Rabbit

Isotype:

IgG

Purification Method:

Protein A purification

Clone ID:

251190G12

Reactivity:

human

GenBank:

NM_001735.3

Immunogen Catalog Number:

Eg4205

Conjugate:

Unconjugated

Full name:

complement component 5

Gene ID:

727

Applications

Tested Applications:

Sandwich ELISA

Range:

0.156-10 ng/mL (Sandwich ELISA)

Recommended Dilutions:

It is recommended that this reagent should be titrated in each testing system to obtain optimal results.

Product Information

MP02611-1 targets C5 in immunoassays as a matched antibody pair. Validated in Sandwich ELISA.

Capture antibody: C5 Recombinant monoclonal antibody, PBS Only (Capture) 86463-3-PBS (251190F8). 100 µg. Concentration 1 mg/mL.

Detection antibody: C5 Recombinant monoclonal antibody, PBS Only (Detector) 86463-2-PBS (251190G12). 100 µg. Concentration 1 mg/mL.

Unconjugated rabbit recombinant monoclonal antibody pair in PBS only storage buffer at a concentration of 1 mg/mL, ready for conjugation. Created using Proteintech's proprietary in-house recombinant technology. Recombinant production enables unrivalled batch-to-batch consistency, easy scale-up, and future security of supply.

Matched antibody pairs are designed for use in a variety of assays and platforms that require matched antibody pairs.

Antibody use should be optimized for each application and assay.

Storage

Storage:

Store at -80°C.

Storage buffer:

PBS only

For technical support and original validation data for this product please contact:

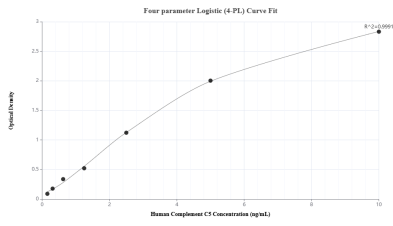
T: 1 (888) 4PTGLAB (1-888-478-4522) (toll free in USA), or 1(312) 455-8498 (outside USA)

E: proteintech@ptglab.com

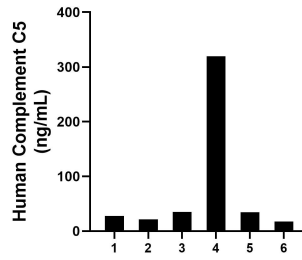
W: ptglab.com

This product is exclusively available under Proteintech Group brand and is not available to purchase from any other manufacturer.

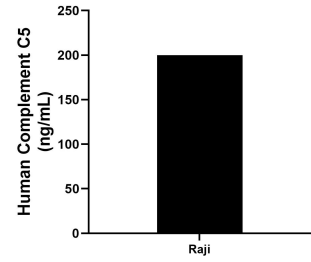
Selected Validation Data



Sandwich ELISA standard curve of MP02611-1, Human Complement C5 Recombinant Matched Antibody Pair - PBS only. 86463-3-PBS was coated to a plate as the capture antibody and incubated with serial dilutions of standard Eg4205. 86463-2-PBS was HRP conjugated as the detection antibody. Range: 0.156-10 ng/mL



Serum of plasma individual healthy human donors was measured. The human Complement C5 concentration of detected samples was determined to be 75.89 ng/mL with a range of 17.23 - 319.31 ng/mL



The mean Complement C5 concentration was determined to be 200.14 ng/mL in C6 cell extract based on a 1.3 mg/mL extract load.