

# GSTP1 Recombinant Matched Antibody Pair, PBS Only

Catalog Number: **MP02614-1**

## Capture Antibody Information

Catalog Number:  
86708-3-PBS

Host:  
Rabbit

Isotype:  
IgG

Purification Method:  
Protein A purification

Clone ID:  
251705C7

Reactivity:  
human

Immunogen Catalog Number:  
Ag8731

Conjugate:  
Unconjugated

Full name:  
glutathione S-transferase pi 1

Gene ID:  
2950

## Detection Antibody Information

Catalog Number:  
86708-2-PBS

Host:  
Rabbit

Isotype:  
IgG

Purification Method:  
Protein A purification

Clone ID:  
251705G6

Reactivity:  
human

GenBank:  
BC010915

Immunogen Catalog Number:  
Ag8731

Conjugate:  
Unconjugated

Full name:  
glutathione S-transferase pi 1

Gene ID:  
2950

## Applications

Tested Applications:  
Cytometric bead array, Sandwich  
ELISA

Range:  
0.156-20 ng/mL (Cytometric Bead  
Array)  
39.1-2500 pg/mL (Sandwich ELISA)

Recommended Dilutions:  
It is recommended that this reagent  
should be titrated in each testing  
system to obtain optimal results.

## Product Information

MP02614-1 targets GSTP1 in immunoassays as a matched antibody pair. Validated in Cytometric bead array, Sandwich ELISA.

Capture antibody: GSTP1 Recombinant monoclonal antibody, PBS Only (Capture) 86708-3-PBS (251705C7). 100 µg. Concentration 1 mg/mL.

Detection antibody: GSTP1 Recombinant monoclonal antibody, PBS Only (Detector) 86708-2-PBS (251705G6). 100 µg. Concentration 1 mg/mL.

Unconjugated rabbit recombinant monoclonal antibody pair in PBS only storage buffer at a concentration of 1 mg/mL, ready for conjugation. Created using Proteintech's proprietary in-house recombinant technology. Recombinant production enables unrivalled batch-to-batch consistency, easy scale-up, and future security of supply.

Matched antibody pairs are designed for use in a variety of assays and platforms that require matched antibody pairs.

Antibody use should be optimized for each application and assay.

## Storage

Storage:  
Store at -80°C.  
Storage buffer:  
PBS only

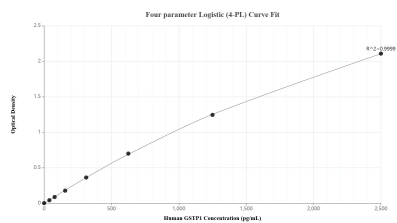
For technical support and original validation data for this product please contact:

T: 1 (888) 4PTGLAB (1-888-478-4522) (toll free  
in USA), or 1(312) 455-8498 (outside USA)

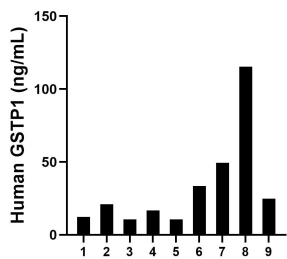
E: [proteintech@ptglab.com](mailto:proteintech@ptglab.com)  
W: [ptglab.com](http://ptglab.com)

This product is exclusively available under Proteintech Group brand and is not available to purchase from any other manufacturer.

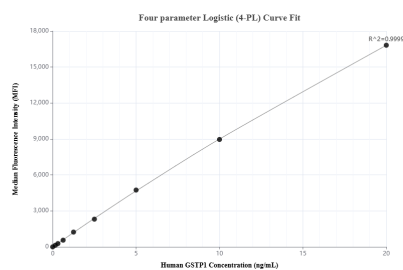
## Selected Validation Data



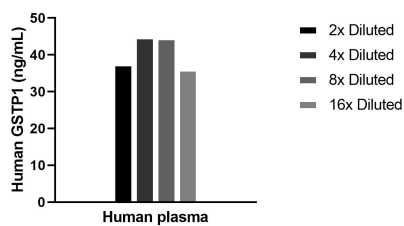
Sandwich ELISA standard curve of MP02614-1, Human GSTP1 Recombinant Matched Antibody Pair - PBS only. 86708-3-PBS was coated to a plate as the capture antibody and incubated with serial dilutions of standard Ag8731. 86708-2-PBS was HRP conjugated as the detection antibody. Range: 39.1-2500 pg/mL



Plasma of nine individual healthy human donors was measured. The GSTP1 concentration of detected samples was determined to be 32.7 ng/mL with a range of 10.5-115.3 ng/mL



Cytometric bead array standard curve of MP02614-1, GSTP1 Recombinant Matched Antibody Pair, PBS Only. Capture antibody: 86708-3-PBS. Detection antibody: 86708-2-PBS. Standard: Ag8731. Range: 0.156-20 ng/mL



The mean GSTP1 concentration was determined to be 40.6 ng/mL in Human plasma.