

CCL15 Recombinant Matched Antibody Pair, PBS Only

Catalog Number:MP02618-1

Capture Antibody Information

Catalog Number:

86738-2-PBS

Host:

Rabbit

Isotype:

IgG

Purification Method:

Protein A purification

Clone ID:

250603H5

Reactivity:

human

Immunogen Catalog Number:

Eg2877

Conjugate:

Unconjugated

Full name:

chemokine (C-C motif) ligand 15

Gene ID:

6359

Detection Antibody Information

Catalog Number:

86738-1-PBS

Host:

Rabbit

Isotype:

IgG

Purification Method:

Protein A purification

Clone ID:

250603E3

Reactivity:

human

GenBank:

NM_032965.5

Immunogen Catalog Number:

Eg2877

Conjugate:

Unconjugated

Full name:

chemokine (C-C motif) ligand 15

Gene ID:

6359

Applications

Tested Applications:

Cytometric bead array, Sandwich ELISA

Range:

0.312-40 ng/mL (Cytometric Bead Array)
78.1-5000 pg/mL (Sandwich ELISA)

Recommended Dilutions:

It is recommended that this reagent should be titrated in each testing system to obtain optimal results.

Product Information

MP02618-1 targets CCL15 in immunoassays as a matched antibody pair. Validated in Cytometric bead array, Sandwich ELISA.

Capture antibody: CCL15 Recombinant monoclonal antibody, PBS Only (Capture) 86738-2-PBS (250603H5). 100 µg. Concentration 1 mg/mL.

Detection antibody: CCL15 Recombinant monoclonal antibody, PBS Only (Detector) 86738-1-PBS (250603E3). 100 µg. Concentration 1 mg/mL.

Unconjugated rabbit recombinant monoclonal antibody pair in PBS only storage buffer at a concentration of 1 mg/mL, ready for conjugation. Created using Proteintech's proprietary in-house recombinant technology. Recombinant production enables unrivalled batch-to-batch consistency, easy scale-up, and future security of supply.

Matched antibody pairs are designed for use in a variety of assays and platforms that require matched antibody pairs.

Antibody use should be optimized for each application and assay.

Storage

Storage:

Store at -80°C.

Storage buffer:

PBS only

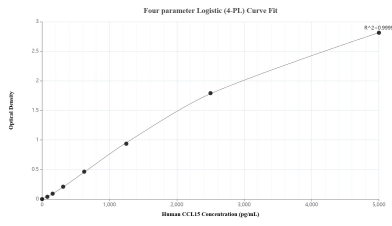
For technical support and original validation data for this product please contact:

T: 1 (888) 4PTGLAB (1-888-478-4522) (toll free in USA), or 1(312) 455-8498 (outside USA)

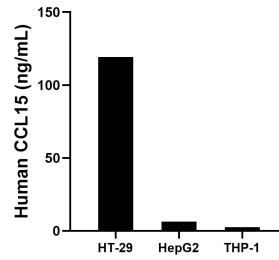
E: proteintech@ptglab.com
W: ptglab.com

This product is exclusively available under Proteintech Group brand and is not available to purchase from any other manufacturer.

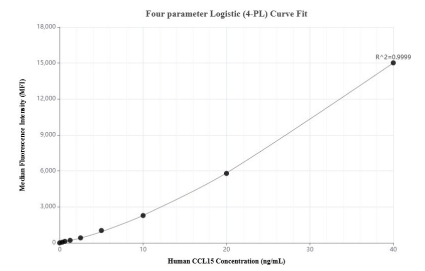
Selected Validation Data



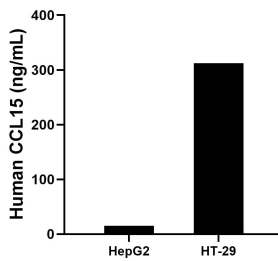
Sandwich ELISA standard curve of MP02618-1, Human CCL15 Recombinant Matched Antibody Pair - PBS only. 86738-2-PBS was coated to a plate as the capture antibody and incubated with serial dilutions of standard Eg2877. 86738-1-PBS was HRP conjugated as the detection antibody. Range: 78.1-5000 pg/mL



The mean CCL15 concentration was determined to be 119.3 ng/mL in HT-29 cell extract based on a 1.1 mg/mL extract load, 6.4 ng/mL in HepG2 cell extract based on a 1.2 mg/mL extract load and 2.5 ng/mL in THP-1 cell extract based on a 1.2 mg/mL extract load.



Cytometric bead array standard curve of MP02618-1, CCL15 Recombinant Matched Antibody Pair, PBS Only. Capture antibody: 86738-2-PBS. Detection antibody: 86738-1-PBS. Standard: Eg2877. Range: 0.312-40 ng/mL



The mean CCL15 concentration was determined to be 15.0 ng/mL in HepG2 cell extract based on a 1.2 mg/mL extract load, 312.2 ng/mL in HT-29 cell extract based on a 1.5 mg/mL extract load.