

MSI1 Recombinant Matched Antibody Pair, PBS Only

Catalog Number: **MP02619-1**

Capture Antibody Information

Catalog Number:
86723-1-PBS

Host:
Rabbit

Isotype:
IgG

Purification Method:
Protein A purification

Clone ID:
251695G8

Reactivity:
human, mouse, rat

Immunogen Catalog Number:
Ag26042

Conjugate:
Unconjugated

Full name:
musashi homolog 1 (Drosophila)

Gene ID:
4440

Detection Antibody Information

Catalog Number:
86723-2-PBS

Host:
Rabbit

Isotype:
IgG

Purification Method:
Protein A purification

Clone ID:
251695G5

Reactivity:
human

GenBank:
BC146463

Immunogen Catalog Number:
Ag26042

Conjugate:
Unconjugated

Full name:
musashi homolog 1 (Drosophila)

Gene ID:
4440

Applications

Tested Applications:
Cytometric bead array

Range:
0.312-40 ng/mL (Cytometric Bead Array)

Recommended Dilutions:
It is recommended that this reagent should be titrated in each testing system to obtain optimal results.

Product Information

MP02619-1 targets MSI1 in immunoassays as a matched antibody pair. Validated in Cytometric bead array.

Capture antibody: MSI1 Recombinant monoclonal antibody, PBS Only (Capture) 86723-1-PBS (251695G8). 100 µg. Concentration 1 mg/mL.

Detection antibody: MSI1 Recombinant monoclonal antibody, PBS Only (Detector) 86723-2-PBS (251695G5). 100 µg. Concentration 1 mg/mL.

Unconjugated rabbit recombinant monoclonal antibody pair in PBS only storage buffer at a concentration of 1 mg/mL, ready for conjugation. Created using Proteintech's proprietary in-house recombinant technology. Recombinant production enables unrivalled batch-to-batch consistency, easy scale-up, and future security of supply.

Matched antibody pairs are designed for use in a variety of assays and platforms that require matched antibody pairs.

Antibody use should be optimized for each application and assay.

Storage

Storage:
Store at -80°C.
Storage buffer:
PBS only

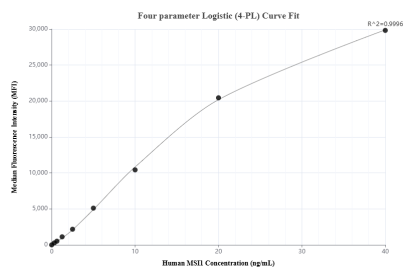
For technical support and original validation data for this product please contact:

T: 1 (888) 4PTGLAB (1-888-478-4522) (toll free in USA), or 1(312) 455-8498 (outside USA)

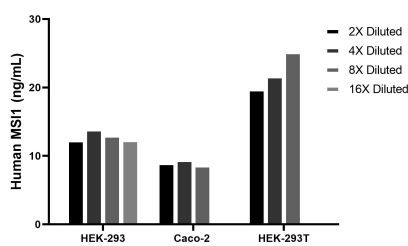
E: proteintech@ptglab.com
W: ptglab.com

This product is exclusively available under Proteintech Group brand and is not available to purchase from any other manufacturer.

Selected Validation Data



Cytometric bead array standard curve of MP02619-1, MSI1 Recombinant Matched Antibody Pair, PBS Only. Capture antibody: 86723-1-PBS. Detection antibody: 86723-2-PBS. Standard: Ag26042. Range: 0.312-40 ng/mL



The mean MSI1 concentration was determined to be 12.9 ng/mL in HEK-293 cell extract based on a 1.2 mg/mL extract load, 9.0 ng/mL in Caco-2 cell extract based on a 1.3 mg/mL extract load, 20.7 ng/mL in HEK-293T cell extract based on a 2.6 mg/mL extract load.