

# APEX1 Recombinant Matched Antibody Pair, PBS Only

Catalog Number: **MP02621-2**

## Capture Antibody Information

**Catalog Number:**  
86719-3-PBS  
**Host:**  
Rabbit  
**Isotype:**  
IgG  
**Purification Method:**  
Protein A purification

**Clone ID:**  
251693B6  
**Reactivity:**  
human  
**Immunogen Catalog Number:**  
Ag0251

**Conjugate:**  
Unconjugated  
**Full name:**  
APEX nuclease (multifunctional DNA repair enzyme) 1  
**Gene ID:**  
328

## Detection Antibody Information

**Catalog Number:**  
86719-1-PBS  
**Host:**  
Rabbit  
**Isotype:**  
IgG  
**Purification Method:**  
Protein A purification

**Clone ID:**  
251693G12  
**Reactivity:**  
human  
**GenBank:**  
BC002338  
**Immunogen Catalog Number:**  
Ag0251

**Conjugate:**  
Unconjugated  
**Full name:**  
APEX nuclease (multifunctional DNA repair enzyme) 1  
**Gene ID:**  
328

## Applications

**Tested Applications:**  
Sandwich ELISA

**Range:**  
0.156-10 ng/mL (Sandwich ELISA)

**Recommended Dilutions:**  
It is recommended that this reagent should be titrated in each testing system to obtain optimal results.

## Product Information

MP02621-2 targets APEX1 in immunoassays as a matched antibody pair. Validated in Sandwich ELISA.

Capture antibody: APEX1 Recombinant monoclonal antibody, PBS Only (Capture) 86719-3-PBS (251693B6). 100 µg. Concentration 1 mg/mL.

Detection antibody: APEX1 Recombinant monoclonal antibody, PBS Only (Detector) 86719-1-PBS (251693G12). 100 µg. Concentration 1 mg/mL.

Unconjugated rabbit recombinant monoclonal antibody pair in PBS only storage buffer at a concentration of 1 mg/mL, ready for conjugation. Created using Proteintech's proprietary in-house recombinant technology. Recombinant production enables unrivalled batch-to-batch consistency, easy scale-up, and future security of supply.

Matched antibody pairs are designed for use in a variety of assays and platforms that require matched antibody pairs.

Antibody use should be optimized for each application and assay.

## Storage

**Storage:**  
Store at -80°C.  
**Storage buffer:**  
PBS only

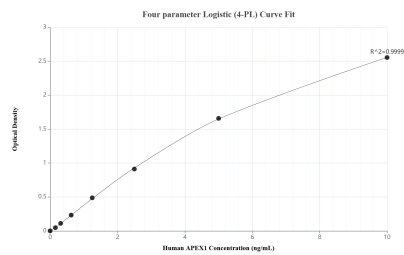
For technical support and original validation data for this product please contact:

T: 1 (888) 4PTGLAB (1-888-478-4522) (toll free in USA), or 1(312) 455-8498 (outside USA)

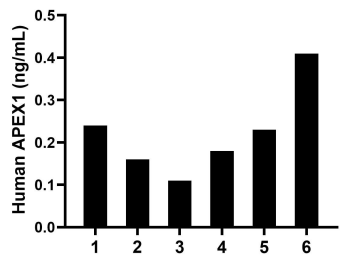
E: [proteintech@ptglab.com](mailto:proteintech@ptglab.com)  
W: [ptglab.com](http://ptglab.com)

**This product is exclusively available under Proteintech Group brand and is not available to purchase from any other manufacturer.**

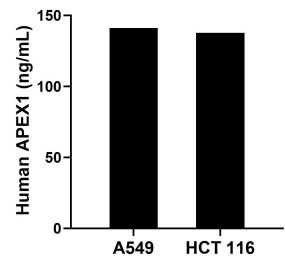
## Selected Validation Data



Sandwich ELISA standard curve of MP02621-2, Human APEX1 Recombinant Matched Antibody Pair - PBS only. 86719-3-PBS was coated to a plate as the capture antibody and incubated with serial dilutions of standard Ag0251. 86719-1-PBS was HRP conjugated as the detection antibody. Range: 0.156-10 ng/mL.



Plasma of six individual healthy human donors was measured. The APEX1 concentration of detected samples was determined to be 0.22 ng/mL with a range of 0.11-0.41 ng/mL.



The mean APEX1 concentration was determined to be 141.21 ng/mL in A549 cell extract based on a 1.20 mg/mL extract load and 137.64 ng/mL in HCT 116 cell extract based on a 1.30 mg/mL extract load.