

For Research Use Only

LAIR2 Recombinant Matched Antibody Pair, PBS Only



Catalog Number:MP02633-1

Capture Antibody Information

Catalog Number:
86559-3-PBS
Host:
Rabbit
Isotype:
IgG
Purification Method:
Protein A purification

Clone ID:
250338B11
Reactivity:
human
Immunogen Catalog Number:
Eg4247

Conjugate:
Unconjugated
Full name:
leukocyte-associated immunoglobulin-like receptor 2
Gene ID:
3904

Detection Antibody Information

Catalog Number:
86559-2-PBS
Host:
Rabbit
Isotype:
IgG
Purification Method:
Protein A purification

Clone ID:
250338D1
Reactivity:
human
GenBank:
BC069366
Immunogen Catalog Number:
Eg4247

Conjugate:
Unconjugated
Full name:
leukocyte-associated immunoglobulin-like receptor 2
Gene ID:
3904

Applications

Tested Applications:
Sandwich ELISA

Range:
7.81-500 pg/mL (Sandwich ELISA)

Recommended Dilutions:
It is recommended that this reagent should be titrated in each testing system to obtain optimal results.

Product Information

MP02633-1 targets LAIR2 in immunoassays as a matched antibody pair. Validated in Sandwich ELISA.

Capture antibody: LAIR2 Recombinant antibody, PBS Only (Capture) 86559-3-PBS (250338B11). 100 µg. Concentration 1 mg/mL.

Detection antibody: LAIR2 Recombinant antibody, PBS Only (Detector) 86559-2-PBS (250338D1). 100 µg. Concentration 1 mg/mL.

Unconjugated rabbit recombinant monoclonal antibody pair in PBS only storage buffer at a concentration of 1 mg/mL, ready for conjugation. Created using Proteintech's proprietary in-house recombinant technology. Recombinant production enables unrivalled batch-to-batch consistency, easy scale-up, and future security of supply.

Matched antibody pairs are designed for use in a variety of assays and platforms that require matched antibody pairs.

Antibody use should be optimized for each application and assay.

Storage

Storage:
Store at -80°C.
Storage buffer:
PBS only

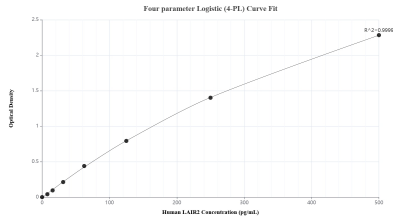
For technical support and original validation data for this product please contact:

T: 1 (888) 4PTGLAB (1-888-478-4522) (toll free in USA), or 1(312) 455-8498 (outside USA)

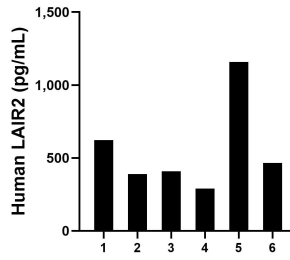
E: proteintech@ptglab.com
W: ptglab.com

This product is exclusively available under Proteintech Group brand and is not available to purchase from any other manufacturer.

Selected Validation Data



Sandwich ELISA standard curve of MP02633-1, Human LAIR2 Recombinant Matched Antibody Pair - PBS only. 86559-3-PBS was coated to a plate as the capture antibody and incubated with serial dilutions of standard Eg4247. 86559-2-PBS was HRP conjugated as the detection antibody. Range: 7.81-500 pg/mL



Urine of six individual healthy human donors was measured. The LAIR2 concentration of detected samples was determined to be 555.7 pg/mL with a range of 289.8-1,158.5 pg/mL.