

For Research Use Only

# IL-20RA Recombinant Matched Antibody Pair, PBS Only



Catalog Number:MP02657-1

## Capture Antibody Information

Catalog Number:

86316-4-PBS

Host:

Rabbit

Isotype:

IgG

Purification Method:

Protein A purification

Clone ID:

250321C3

Reactivity:

human

Immunogen Catalog Number:

Eg2780

Conjugate:

Unconjugated

Full name:

interleukin 20 receptor, alpha

Gene ID:

53832

## Detection Antibody Information

Catalog Number:

86316-3-PBS

Host:

Rabbit

Isotype:

IgG

Purification Method:

Protein A purification

Clone ID:

250321B5

Reactivity:

human

GenBank:

N/A, 100%

Immunogen Catalog Number:

Eg2780

Conjugate:

Unconjugated

Full name:

interleukin 20 receptor, alpha

Gene ID:

53832

## Applications

Tested Applications:

Sandwich ELISA

Range:

62.5-4000 pg/mL (Sandwich ELISA)

Recommended Dilutions:

It is recommended that this reagent should be titrated in each testing system to obtain optimal results.

## Product Information

MP02657-1 targets IL-20RA in immunoassays as a matched antibody pair. Validated in Sandwich ELISA.

Capture antibody: IL20RA Recombinant monoclonal antibody, PBS Only (Capture) 86316-4-PBS (250321C3). 100 µg. Concentration 1 mg/mL.

Detection antibody: IL20RA Recombinant monoclonal antibody, PBS Only (Detector) 86316-3-PBS (250321B5). 100 µg. Concentration 1 mg/mL.

Unconjugated rabbit recombinant monoclonal antibody pair in PBS only storage buffer at a concentration of 1 mg/mL, ready for conjugation. Created using Proteintech's proprietary in-house recombinant technology. Recombinant production enables unrivalled batch-to-batch consistency, easy scale-up, and future security of supply.

Matched antibody pairs are designed for use in a variety of assays and platforms that require matched antibody pairs.

Antibody use should be optimized for each application and assay.

## Storage

Storage:

Store at -80°C.

Storage buffer:

PBS only

For technical support and original validation data for this product please contact:

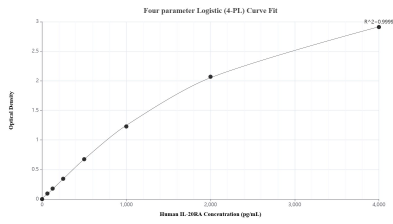
T: 1 (888) 4PTGLAB (1-888-478-4522) (toll free in USA), or 1(312) 455-8498 (outside USA)

E: [proteintech@ptglab.com](mailto:proteintech@ptglab.com)

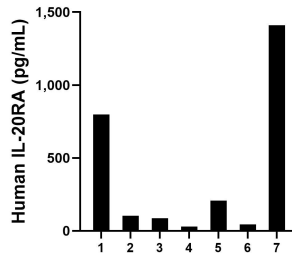
W: [ptglab.com](http://ptglab.com)

This product is exclusively available under Proteintech Group brand and is not available to purchase from any other manufacturer.

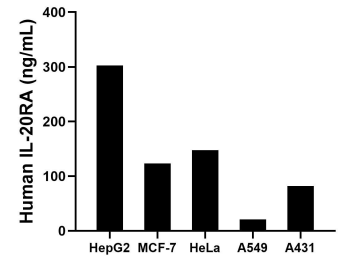
## Selected Validation Data



Sandwich ELISA standard curve of MP02657-1, Human IL-20RA Recombinant Matched Antibody Pair - PBS only. 86316-4-PBS was coated to a plate as the capture antibody and incubated with serial dilutions of standard Eg2780. 86316-3-PBS was HRP conjugated as the detection antibody. Range: 62.5-4000 pg/mL



Plasma of seven individual healthy human donors was measured. The IL-20RA concentration of detected samples was determined to be 383.0 pg/mL with a range of 29.6-1,410.8 pg/mL.



The mean IL-20RA concentration was determined to be 302.5 ng/mL in HepG2 cell extract based on a 1.2 mg/mL extract load, 123.4 ng/mL in MCF-7 cell extract based on a 1.2 mg/mL extract load, 147.6 ng/mL in HeLa cell extract based on a 1.2 mg/mL extract load, 21.1 ng/mL in A549 cell extract based on a 1.1 mg/mL extract load and 81.6 ng/mL in A431 cell extract based on a 1.5 mg/mL extract load.