

Surfactant protein D Recombinant Matched Antibody Pair, PBS Only

Catalog Number: **MP02661-1**

Capture Antibody Information

Catalog Number:

86416-4-PBS

Host:

Rabbit

Isotype:

IgG

Purification Method:

Protein A purification

Clone ID:

250947A5

Reactivity:

human

Immunogen Catalog Number:

Eg4996

Conjugate:

Unconjugated

Full name:

surfactant protein D

Gene ID:

6441

Detection Antibody Information

Catalog Number:

86416-3-PBS

Host:

Rabbit

Isotype:

IgG

Purification Method:

Protein A purification

Clone ID:

250947D9

Reactivity:

human

GenBank:

NM_003019.5

Immunogen Catalog Number:

Eg4996

Conjugate:

Unconjugated

Full name:

surfactant protein D

Gene ID:

6441

Applications

Tested Applications:

Sandwich ELISA

Range:

0.156-10 ng/mL (Sandwich ELISA)

Recommended Dilutions:

It is recommended that this reagent should be titrated in each testing system to obtain optimal results.

Product Information

MP02661-1 targets Surfactant protein D in immunoassays as a matched antibody pair. Validated in Sandwich ELISA.

Capture antibody: SP-D/SFTPD Recombinant monoclonal antibody, PBS Only (Capture) 86416-4-PBS (250947A5).
100 µg. Concentration 1 mg/mL.

Detection antibody: SP-D/SFTPD Recombinant monoclonal antibody, PBS Only (Detector) 86416-3-PBS (250947D9).
100 µg. Concentration 1 mg/mL.

Unconjugated rabbit recombinant monoclonal antibody pair in PBS only storage buffer at a concentration of 1 mg/mL, ready for conjugation. Created using Proteintech's proprietary in-house recombinant technology. Recombinant production enables unrivalled batch-to-batch consistency, easy scale-up, and future security of supply.

Matched antibody pairs are designed for use in a variety of assays and platforms that require matched antibody pairs.

Antibody use should be optimized for each application and assay.

Storage

Storage:

Store at -80°C.

Storage buffer:

PBS only

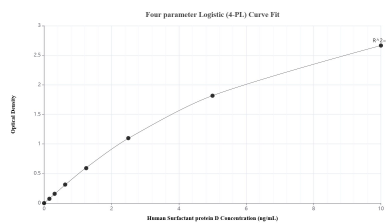
For technical support and original validation data for this product please contact:

T: 1 (888) 4PTGLAB (1-888-478-4522) (toll free
in USA), or 1(312) 455-8498 (outside USA)

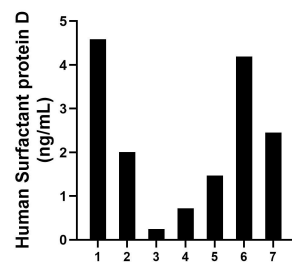
E: proteintech@ptglab.com
W: ptglab.com

This product is exclusively available under Proteintech Group brand and is not available to purchase from any other manufacturer.

Selected Validation Data



Sandwich ELISA standard curve of MP02661-1, Human Surfactant protein D Recombinant Matched Antibody Pair - PBS only. 86416-4-PBS was coated to a plate as the capture antibody and incubated with serial dilutions of standard Eg4996. 86416-3-PBS was HRP conjugated as the detection antibody. Range: 0.156-10 ng/mL



Plasma of seven individual healthy human donors was measured. The Surfactant protein D concentration of detected samples was determined to be 2.24 ng/mL with a range of 0.25-4.59 ng/mL.