

For Research Use Only

# CCL3/MIP-1 alpha Recombinant Matched Antibody Pair, PBS Only



Catalog Number:MP02665-2

## Capture Antibody Information

Catalog Number:

86780-1-PBS

Host:

Rabbit

Isotype:

IgG

Purification Method:

Protein A purification

Clone ID:

251524A10

Reactivity:

human

Immunogen Catalog Number:

Eg3309

Conjugate:

Unconjugated

Full name:

chemokine (C-C motif) ligand 3

Gene ID:

6348

## Detection Antibody Information

Catalog Number:

86780-4-PBS

Host:

Rabbit

Isotype:

IgG

Purification Method:

Protein A purification

Clone ID:

251524F2

Reactivity:

human

GenBank:

BC071834

Immunogen Catalog Number:

Eg3309

Conjugate:

Unconjugated

Full name:

chemokine (C-C motif) ligand 3

Gene ID:

6348

## Applications

Tested Applications:

Sandwich ELISA

Range:

78.1-5000 pg/mL (Sandwich ELISA)

Recommended Dilutions:

It is recommended that this reagent should be titrated in each testing system to obtain optimal results.

## Product Information

MP02665-2 targets CCL3/MIP-1 alpha in immunoassays as a matched antibody pair. Validated in Sandwich ELISA.

Capture antibody: CCL3 Recombinant monoclonal antibody, PBS Only (Capture/Detector) 86780-1-PBS (251524A10). 100 µg. Concentration 1 mg/mL.

Detection antibody: CCL3 Recombinant monoclonal antibody, PBS Only (Detector) 86780-4-PBS (251524F2). 100 µg. Concentration 1 mg/mL.

Unconjugated rabbit recombinant monoclonal antibody pair in PBS only storage buffer at a concentration of 1 mg/mL, ready for conjugation. Created using Proteintech's proprietary in-house recombinant technology. Recombinant production enables unrivalled batch-to-batch consistency, easy scale-up, and future security of supply.

Matched antibody pairs are designed for use in a variety of assays and platforms that require matched antibody pairs.

Antibody use should be optimized for each application and assay.

## Storage

Storage:

Store at -80°C.

Storage buffer:

PBS only

For technical support and original validation data for this product please contact:

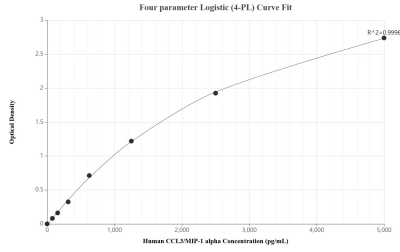
T: 1 (888) 4PTGLAB (1-888-478-4522) (toll free in USA), or 1(312) 455-8498 (outside USA)

E: [proteintech@ptglab.com](mailto:proteintech@ptglab.com)

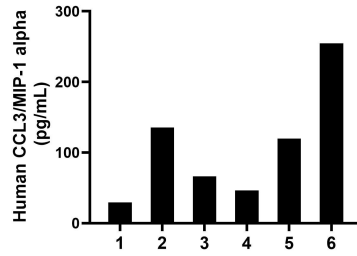
W: [ptglab.com](http://ptglab.com)

This product is exclusively available under Proteintech Group brand and is not available to purchase from any other manufacturer.

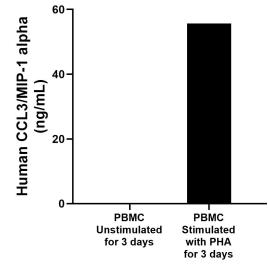
## Selected Validation Data



Sandwich ELISA standard curve of MP02665-2, Human CCL3/MIP-1 alpha Recombinant Matched Antibody Pair - PBS only. 86780-1-PBS was coated to a plate as the capture antibody and incubated with serial dilutions of standard Eg3309. 86780-4-PBS was HRP conjugated as the detection antibody. Range: 78.1-5000 pg/mL



Plasma of six individual healthy human donors was measured. The CCL3/MIP-1 alpha concentration of detected samples was determined to be 108.7 pg/mL with a range of 29.6-254.7 pg/mL



Human peripheral blood mononuclear cells (PBMC) were cultured unstimulated or stimulated with 10 µg/mL PHA for 3 days. The mean CCL3/MIP-1 alpha concentration was determined to be 0.1 ng/mL in unstimulated PBMC supernatant, 55.6 ng/mL in PHA stimulated PBMC supernatant.