

NUP153 Recombinant Matched Antibody Pair, PBS Only

Catalog Number: **MP02679-1**

Capture Antibody Information

Catalog Number:

86622-1-PBS

Host:

Rabbit

Isotype:

IgG

Purification Method:

Protein A purification

Clone ID:

251519G11

Reactivity:

human, mouse

Immunogen Catalog Number:

Ag5519

Conjugate:

Unconjugated

Full name:

nucleoporin 153kDa

Gene ID:

9972

Detection Antibody Information

Catalog Number:

86622-2-PBS

Host:

Rabbit

Isotype:

IgG

Purification Method:

Protein A purification

Clone ID:

251519B2

Reactivity:

human

GenBank:

BC052965

Immunogen Catalog Number:

Ag5519

Conjugate:

Unconjugated

Full name:

nucleoporin 153kDa

Gene ID:

9972

Applications

Tested Applications:

Sandwich ELISA

Range:

1.56-100 ng/mL (Sandwich ELISA)

Recommended Dilutions:

It is recommended that this reagent should be titrated in each testing system to obtain optimal results.

Product Information

MP02679-1 targets NUP153 in immunoassays as a matched antibody pair. Validated in Sandwich ELISA.

Capture antibody: NUP153 Recombinant monoclonal antibody, PBS Only (Capture) 86622-1-PBS (251519G11). 100 µg. Concentration 1 mg/mL.

Detection antibody: NUP153 Recombinant monoclonal antibody, PBS Only (Detector) 86622-2-PBS (251519B2). 100 µg. Concentration 1 mg/mL.

Unconjugated rabbit recombinant monoclonal antibody pair in PBS only storage buffer at a concentration of 1 mg/mL, ready for conjugation. Created using Proteintech's proprietary in-house recombinant technology. Recombinant production enables unrivalled batch-to-batch consistency, easy scale-up, and future security of supply.

Matched antibody pairs are designed for use in a variety of assays and platforms that require matched antibody pairs.

Antibody use should be optimized for each application and assay.

Storage

Storage:

Store at -80°C.

Storage buffer:

PBS only

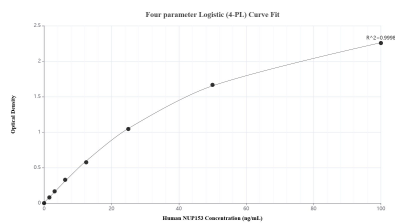
For technical support and original validation data for this product please contact:

T: 1 (888) 4PTGLAB (1-888-478-4522) (toll free in USA), or 1(312) 455-8498 (outside USA)

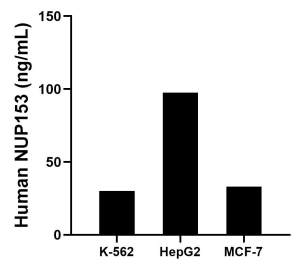
E: proteintech@ptglab.com
W: ptglab.com

This product is exclusively available under Proteintech Group brand and is not available to purchase from any other manufacturer.

Selected Validation Data



Sandwich ELISA standard curve of MP02679-1, Human NUP153 Recombinant Matched Antibody Pair - PBS only. 86622-1-PBS was coated to a plate as the capture antibody and incubated with serial dilutions of standard Ag5519. 86622-2-PBS was HRP conjugated as the detection antibody. Range: 1.56-100 ng/mL.



The mean NUP153 concentration was determined to be 30.07 ng/mL in K-562 cell extract based on a 1.20 mg/mL extract load, 97.51 ng/mL in HepG2 cell extract based on a 1.20 mg/mL extract load and 33.07 ng/mL in MCF-7 cell extract based on a 1.20 mg/mL extract load.