

For Research Use Only

Mouse DFNA5/GSDME Recombinant Matched Antibody Pair, PBS Only



Catalog Number:MP02686-1

Capture Antibody Information

Catalog Number:
82955-3-PBS
Host:
Rabbit
Isotype:
IgG
Purification Method:
Protein A purification

Clone ID:
251415D4
Reactivity:
mouse
Immunogen Catalog Number:
Ag33622

Conjugate:
Unconjugated
Full name:
deafness, autosomal dominant 5 (human)
Gene ID:
54722

Detection Antibody Information

Catalog Number:
82955-2-PBS
Host:
Rabbit
Isotype:
IgG
Purification Method:
Protein A purification

Clone ID:
251415B1
Reactivity:
mouse, rat
GenBank:
BC132303
Immunogen Catalog Number:
Ag33622

Conjugate:
Unconjugated
Full name:
deafness, autosomal dominant 5 (human)
Gene ID:
54722

Applications

Tested Applications:
Sandwich ELISA

Range:
0.391-25 ng/mL (Sandwich ELISA)

Recommended Dilutions:
It is recommended that this reagent should be titrated in each testing system to obtain optimal results.

Product Information

MP02686-1 targets DFNA5/GSDME in immunoassays as a matched antibody pair. Validated in Sandwich ELISA.

Capture antibody: Mouse Dfna5 Recombinant monoclonal antibody, PBS Only (Capture) 82955-3-PBS (251415D4). 100 µg. Concentration 1 mg/mL.

Detection antibody: Mouse DFNA5/GSDME Recombinant monoclonal antibody, PBS Only (Detector) 82955-2-PBS (251415B1). 100 µg. Concentration 1 mg/mL.

Unconjugated rabbit recombinant monoclonal antibody pair in PBS only storage buffer at a concentration of 1 mg/mL, ready for conjugation. Created using Proteintech's proprietary in-house recombinant technology. Recombinant production enables unrivalled batch-to-batch consistency, easy scale-up, and future security of supply.

Matched antibody pairs are designed for use in a variety of assays and platforms that require matched antibody pairs.

Antibody use should be optimized for each application and assay.

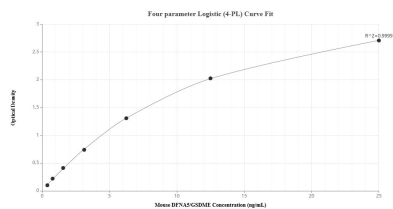
Storage

Storage:
Store at -80°C.
Storage buffer:
PBS only

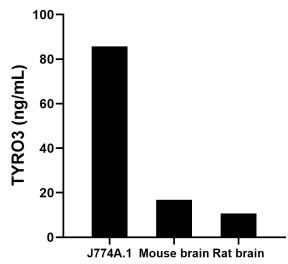
For technical support and original validation data for this product please contact:
T: 1 (888) 4PTGLAB (1-888-478-4522) (toll free in USA), or 1(312) 455-8498 (outside USA)
E: proteintech@ptglab.com
W: ptglab.com

This product is exclusively available under Proteintech Group brand and is not available to purchase from any other manufacturer.

Selected Validation Data



Sandwich ELISA standard curve of MP02686-1, Mouse DFNA5/GSDME Recombinant Matched Antibody Pair - PBS only. 82955-3-PBS was coated to a plate as the capture antibody and incubated with serial dilutions of standard Ag33622. 82955-2-PBS was HRP conjugated as the detection antibody. Range: 0.391-25 ng/mL



The mean DFNA5/GSDME concentration was determined to be 85.78 ng/mL in J744A.1 cell extract based on a 1.3 mg/mL extract load, 16.86 ng/mL in mouse brain tissue extract based on a 7.0 mg/mL extract load and 10.69 ng/mL in rat brain tissue extract based on a 8.2 mg/mL extract load.