

For Research Use Only

LTBR Recombinant Matched Antibody Pair, PBS Only



Catalog Number:MP02693-2

Capture Antibody Information

Catalog Number:
86823-3-PBS
Host:
Rabbit
Isotype:
IgG
Purification Method:
Protein A purification

Clone ID:
251739C1
Reactivity:
human
Immunogen Catalog Number:
Eg5126

Conjugate:
Unconjugated
Full name:
Lymphotoxin beta receptor (TNFR superfamily, member 3)
Gene ID:
4055

Detection Antibody Information

Catalog Number:
86823-4-PBS
Host:
Rabbit
Isotype:
IgG
Purification Method:
Protein A purification

Clone ID:
251739F4
Reactivity:
human
GenBank:
BC026262
Immunogen Catalog Number:
Eg5126

Conjugate:
Unconjugated
Full name:
Lymphotoxin beta receptor (TNFR superfamily, member 3)
Gene ID:
4055

Applications

Tested Applications:
Sandwich ELISA

Range:
0.156-10 ng/mL (Sandwich ELISA)

Recommended Dilutions:
It is recommended that this reagent should be titrated in each testing system to obtain optimal results.

Product Information

MP02693-2 targets LTBR in immunoassays as a matched antibody pair. Validated in Sandwich ELISA.

Capture antibody: LTBR Recombinant monoclonal antibody, PBS Only (Capture) 86823-3-PBS (251739C1). 100 µg. Concentration 1 mg/mL.

Detection antibody: LTBR Recombinant monoclonal antibody, PBS Only (Detector) 86823-4-PBS (251739F4). 100 µg. Concentration 1 mg/mL.

Unconjugated rabbit recombinant monoclonal antibody pair in PBS only storage buffer at a concentration of 1 mg/mL, ready for conjugation. Created using Proteintech's proprietary in-house recombinant technology. Recombinant production enables unrivalled batch-to-batch consistency, easy scale-up, and future security of supply.

Matched antibody pairs are designed for use in a variety of assays and platforms that require matched antibody pairs.

Antibody use should be optimized for each application and assay.

Storage

Storage:
Store at -80°C.
Storage buffer:
PBS only

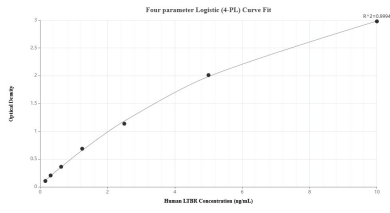
For technical support and original validation data for this product please contact:

T: 1 (888) 4PTGLAB (1-888-478-4522) (toll free in USA), or 1(312) 455-8498 (outside USA)

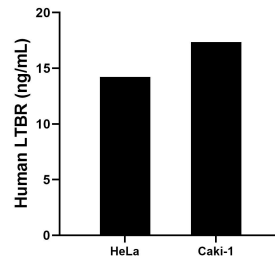
E: proteintech@ptglab.com
W: ptglab.com

This product is exclusively available under Proteintech Group brand and is not available to purchase from any other manufacturer.

Selected Validation Data



Sandwich ELISA standard curve of MP02693-2, Human LTBR Recombinant Matched Antibody Pair - PBS only. 86823-3-PBS was coated to a plate as the capture antibody and incubated with serial dilutions of standard Eg5126. 86823-4-PBS was HRP conjugated as the detection antibody. Range: 0.156-10 ng/mL



The mean LTBR concentration was determined to be 14.22 ng/mL in HeLa cell extract based on a 1.2 mg/mL extract load and 17.35 ng/mL in Caki-1 cell extract based on a 1.2 mg/mL extract load.