

For Research Use Only



TOM70 Recombinant Matched Antibody Pair, PBS Only

Catalog Number:MP02700-1

Capture Antibody Information

Catalog Number:
86840-2-PBS
Host:
Rabbit
Isotype:
IgG
Purification Method:
Protein A purification

Clone ID:
251874D11
Reactivity:
human
Immunogen Catalog Number:
Ag6027

Conjugate:
Unconjugated
Full name:
translocase of outer mitochondrial membrane 70 homolog A (S. cerevisiae)
Gene ID:
9868

Detection Antibody Information

Catalog Number:
86840-1-PBS
Host:
Rabbit
Isotype:
IgG
Purification Method:
Protein A purification

Clone ID:
251874B7
Reactivity:
human
GenBank:
BC052994
Immunogen Catalog Number:
Ag6027

Conjugate:
Unconjugated
Full name:
translocase of outer mitochondrial membrane 70 homolog A (S. cerevisiae)
Gene ID:
9868

Applications

Tested Applications:
Cytometric bead array

Range:
0.312-40 ng/mL (Cytometric Bead Array)

Recommended Dilutions:
It is recommended that this reagent should be titrated in each testing system to obtain optimal results.

Product Information

MP02700-1 targets TOM70 in immunoassays as a matched antibody pair. Validated in Cytometric bead array.

Capture antibody: TOM70 Recombinant monoclonal antibody, PBS Only (Capture) 86840-2-PBS (251874D11). 100 µg. Concentration 1 mg/mL.

Detection antibody: TOM70 Recombinant monoclonal antibody, PBS Only (Detector) 86840-1-PBS (251874B7). 100 µg. Concentration 1 mg/mL.

Unconjugated rabbit recombinant monoclonal antibody pair in PBS only storage buffer at a concentration of 1 mg/mL, ready for conjugation. Created using Proteintech's proprietary in-house recombinant technology. Recombinant production enables unrivalled batch-to-batch consistency, easy scale-up, and future security of supply.

Matched antibody pairs are designed for use in a variety of assays and platforms that require matched antibody pairs.

Antibody use should be optimized for each application and assay.

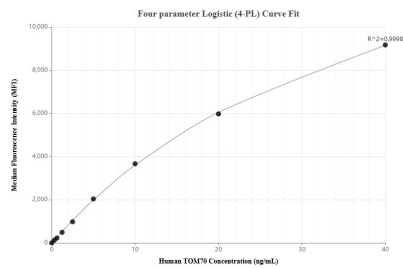
Storage

Storage:
Store at -80°C.
Storage buffer:
PBS only

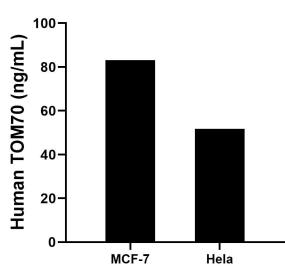
For technical support and original validation data for this product please contact:
T: 1 (888) 4PTGLAB (1-888-478-4522) (toll free in USA), or 1(312) 455-8498 (outside USA)
E: proteintech@ptglab.com
W: ptglab.com

This product is exclusively available under Proteintech Group brand and is not available to purchase from any other manufacturer.

Selected Validation Data



Cytometric bead array standard curve of MP02700-1, TOM70 Recombinant Matched Antibody Pair, PBS Only. Capture antibody: 86840-2-PBS. Detection antibody: 86840-1-PBS. Standard: Ag6027. Range: 0.312-40 ng/mL



The mean TOM70 concentration was determined to be 83.1 ng/mL in MCF-7 cell extract based on a 1.2 mg/mL extract load, 51.7 ng/mL in HeLa cell extract based on a 1.2 mg/mL extract load.