

For Research Use Only

# RGS7 Recombinant Matched Antibody Pair, PBS Only



Catalog Number:MP02701-1

## Capture Antibody Information

Catalog Number:  
86846-2-PBS

Host:  
Rabbit

Isotype:  
IgG

Purification Method:  
Protein A purification

Clone ID:  
251849E9

Reactivity:  
human

Immunogen Catalog Number:  
Ag4982

Conjugate:  
Unconjugated

Full name:  
regulator of G-protein signaling 7

Gene ID:  
6000

## Detection Antibody Information

Catalog Number:  
86846-1-PBS

Host:  
Rabbit

Isotype:  
IgG

Purification Method:  
Protein A purification

Clone ID:  
251849C4

Reactivity:  
human

GenBank:  
BC022009

Immunogen Catalog Number:  
Ag4982

Conjugate:  
Unconjugated

Full name:  
regulator of G-protein signaling 7

Gene ID:  
6000

## Applications

Tested Applications:  
Cytometric bead array

Range:  
0.781-100 ng/mL (Cytometric Bead Array)

Recommended Dilutions:  
It is recommended that this reagent should be titrated in each testing system to obtain optimal results.

## Product Information

MP02701-1 targets RGS7 in immunoassays as a matched antibody pair. Validated in Cytometric bead array.

Capture antibody: RGS7 Recombinant monoclonal antibody, PBS Only (Capture) 86846-2-PBS (251849E9). 100 µg. Concentration 1 mg/mL.

Detection antibody: RGS7 Recombinant monoclonal antibody, PBS Only (Detector) 86846-1-PBS (251849C4). 100 µg. Concentration 1 mg/mL.

Unconjugated rabbit recombinant monoclonal antibody pair in PBS only storage buffer at a concentration of 1 mg/mL, ready for conjugation. Created using Proteintech's proprietary in-house recombinant technology. Recombinant production enables unrivalled batch-to-batch consistency, easy scale-up, and future security of supply.

Matched antibody pairs are designed for use in a variety of assays and platforms that require matched antibody pairs.

Antibody use should be optimized for each application and assay.

## Storage

Storage:  
Store at -80°C.  
Storage buffer:  
PBS only

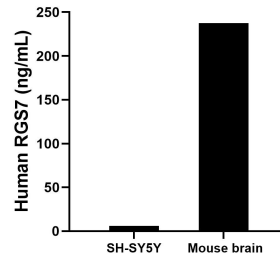
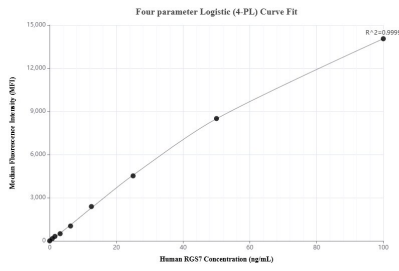
For technical support and original validation data for this product please contact:

T: 1 (888) 4PTGLAB (1-888-478-4522) (toll free in USA), or 1(312) 455-8498 (outside USA)

E: [proteintech@ptglab.com](mailto:proteintech@ptglab.com)  
W: [ptglab.com](http://ptglab.com)

**This product is exclusively available under Proteintech Group brand and is not available to purchase from any other manufacturer.**

## Selected Validation Data



Cytometric bead array standard curve of MP02701-1, RGS7 Recombinant Matched Antibody Pair, PBS Only. Capture antibody: 86846-2-PBS. Detection antibody: 86846-1-PBS. Standard: Ag4982. Range: 0.781-100 ng/mL.

The mean RGS7 concentration was determined to be 5.9 ng/mL in SH-SY5Y cell extract based on a 1.2 mg/mL extract load, 237.6 ng/mL in Mouse brain tissue extract based on a 3.2 mg/mL extract load.