

For Research Use Only

Total MMP-10 Recombinant Matched Antibody Pair, PBS Only



Catalog Number:MP02702-2

Capture Antibody Information

Catalog Number:
86845-2-PBS
Host:
Rabbit
Isotype:
IgG
Purification Method:
Protein A purification

Clone ID:
251067G2
Reactivity:
human
Immunogen Catalog Number:
Eg3038

Conjugate:
Unconjugated
Full name:
matrix metallopeptidase 10 (stromelysin 2)
Gene ID:
4319

Detection Antibody Information

Catalog Number:
86845-3-PBS
Host:
Rabbit
Isotype:
IgG
Purification Method:
Protein A purification

Clone ID:
251067G1
Reactivity:
human
GenBank:
NM_002425.3
Immunogen Catalog Number:
Eg3038

Conjugate:
Unconjugated
Full name:
matrix metallopeptidase 10 (stromelysin 2)
Gene ID:
4319

Applications

Tested Applications:
Sandwich ELISA

Range:
0.156-10 ng/mL (Sandwich ELISA)

Recommended Dilutions:
It is recommended that this reagent should be titrated in each testing system to obtain optimal results.

Product Information

MP02702-2 targets Total MMP-10 in immunoassays as a matched antibody pair. Validated in Sandwich ELISA.

Capture antibody: MMP10 Recombinant monoclonal antibody, PBS Only (Capture) 86845-2-PBS (251067G2). 100 µg. Concentration 1 mg/mL.

Detection antibody: MMP10 Recombinant monoclonal antibody, PBS Only (Detector) 86845-3-PBS (251067G1). 100 µg. Concentration 1 mg/mL.

Unconjugated rabbit recombinant monoclonal antibody pair in PBS only storage buffer at a concentration of 1 mg/mL, ready for conjugation. Created using Proteintech's proprietary in-house recombinant technology. Recombinant production enables unrivalled batch-to-batch consistency, easy scale-up, and future security of supply.

Matched antibody pairs are designed for use in a variety of assays and platforms that require matched antibody pairs.

Antibody use should be optimized for each application and assay.

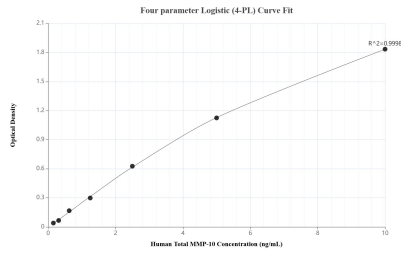
Storage

Storage:
Store at -80°C.
Storage buffer:
PBS only

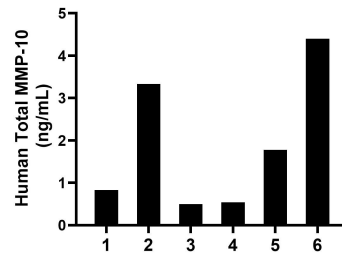
For technical support and original validation data for this product please contact:
T: 1 (888) 4PTGLAB (1-888-478-4522) (toll free in USA), or 1(312) 455-8498 (outside USA) E: proteintech@ptglab.com W: ptglab.com

This product is exclusively available under Proteintech Group brand and is not available to purchase from any other manufacturer.

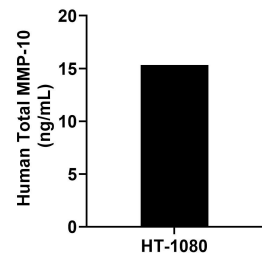
Selected Validation Data



Sandwich ELISA standard curve of MP02702-2, Human Total MMP-10 Recombinant Matched Antibody Pair - PBS only. 86845-2-PBS was coated to a plate as the capture antibody and incubated with serial dilutions of standard Eg3038. 86845-3-PBS was HRP conjugated as the detection antibody. Range: 0.156-10 ng/mL



Plasma of six individual healthy human donors was measured. The Total MMP-10 concentration of detected samples was determined to be 1.90 ng/mL with a range of 0.50-4.40 ng/mL.



HT-1080 were cultured in DMEM supplemented with 10% fetal bovine serum, 2.5 mM L-glutamine, 100 U/mL penicillin, and 100 µg/mL streptomycin sulfate. An aliquot of the cell culture supernatant was removed, assayed for human Total MMP-10, and measured 15.32 ng/mL.