

Nucleoside phosphorylase Recombinant Matched Antibody Pair, PBS Only

Catalog Number:MP02719-1

Capture Antibody Information

Catalog Number:

86651-2-PBS

Host:

Rabbit

Isotype:

IgG

Purification Method:

Protein A purification

Clone ID:

251603E8

Reactivity:

human

Immunogen Catalog Number:

Ag12507

Conjugate:

Unconjugated

Full name:

nucleoside phosphorylase

Gene ID:

4860

Detection Antibody Information

Catalog Number:

86651-1-PBS

Host:

Rabbit

Isotype:

IgG

Purification Method:

Protein A purification

Clone ID:

251603E11

Reactivity:

human, mouse, rat

GenBank:

BC106074

Immunogen Catalog Number:

Ag12507

Conjugate:

Unconjugated

Full name:

nucleoside phosphorylase

Gene ID:

4860

Applications

Tested Applications:

Sandwich ELISA

Range:

0.313-20 ng/mL (Sandwich ELISA)

Recommended Dilutions:

It is recommended that this reagent should be titrated in each testing system to obtain optimal results.

Product Information

MP02719-1 targets Nucleoside phosphorylase in immunoassays as a matched antibody pair. Validated in Sandwich ELISA.

Capture antibody: NP Recombinant monoclonal antibody, PBS Only (Capture) 86651-2-PBS (251603E8). 100 µg. Concentration 1 mg/mL.

Detection antibody: Nucleoside phosphorylase Recombinant monoclonal antibody, PBS Only (Detector) 86651-1-PBS (251603E11). 100 µg. Concentration 1 mg/mL.

Unconjugated rabbit recombinant monoclonal antibody pair in PBS only storage buffer at a concentration of 1 mg/mL, ready for conjugation. Created using Proteintech's proprietary in-house recombinant technology. Recombinant production enables unrivalled batch-to-batch consistency, easy scale-up, and future security of supply.

Matched antibody pairs are designed for use in a variety of assays and platforms that require matched antibody pairs.

Antibody use should be optimized for each application and assay.

Storage

Storage:

Store at -80°C.

Storage buffer:

PBS only

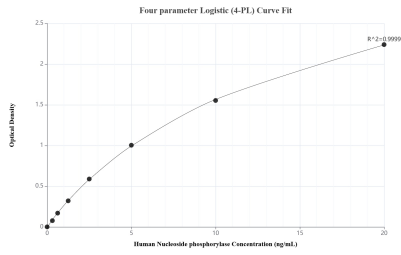
For technical support and original validation data for this product please contact:

T: 1 (888) 4PTGLAB (1-888-478-4522) (toll free in USA), or 1(312) 455-8498 (outside USA)

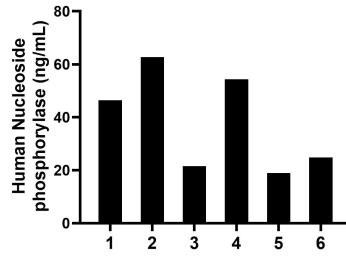
E: proteintech@ptglab.com
W: ptglab.com

This product is exclusively available under Proteintech Group brand and is not available to purchase from any other manufacturer.

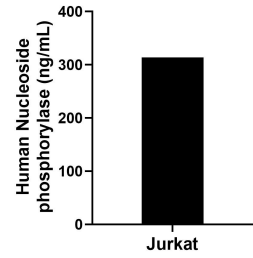
Selected Validation Data



Sandwich ELISA standard curve of MP02719-1, Human Nucleoside phosphorylase Recombinant Matched Antibody Pair - PBS only. 86651-2-PBS was coated to a plate as the capture antibody and incubated with serial dilutions of standard Ag12507. 86651-1-PBS was HRP conjugated as the detection antibody. Range: 0.313-20 ng/mL



Plasma of six individual healthy human donors was measured. The Nucleoside phosphorylase concentration of detected samples was determined to be 38.13 ng/mL with a range of 18.89-62.76 ng/mL



The mean Nucleoside phosphorylase concentration was determined to be 313.73 ng/mL in Jurkat cell extract based on a 1.20 mg/mL extract load.