

For Research Use Only

CCT2 Recombinant Matched Antibody Pair, PBS Only



Catalog Number:MP02720-1

Capture Antibody Information

Catalog Number:
86898-2-PBS

Host:
Rabbit

Isotype:
IgG

Purification Method:
Protein A purification

Clone ID:
251618F8

Reactivity:
human

Immunogen Catalog Number:
Ag19264

Conjugate:
Unconjugated

Full name:
chaperonin containing TCP1, subunit 2 (beta)

Gene ID:
10576

Detection Antibody Information

Catalog Number:
86898-1-PBS

Host:
Rabbit

Isotype:
IgG

Purification Method:
Protein A purification

Clone ID:
251618D3

Reactivity:
human

GenBank:
BC113516

Immunogen Catalog Number:
Ag19264

Conjugate:
Unconjugated

Full name:
chaperonin containing TCP1, subunit 2 (beta)

Gene ID:
10576

Applications

Tested Applications:
Sandwich ELISA

Range:
1.56-100 ng/mL (Sandwich ELISA)

Recommended Dilutions:
It is recommended that this reagent should be titrated in each testing system to obtain optimal results.

Product Information

MP02720-1 targets CCT2 in immunoassays as a matched antibody pair. Validated in Sandwich ELISA.

Capture antibody: CCT2 Recombinant monoclonal antibody, PBS Only (Capture) 86898-2-PBS (251618F8). 100 µg. Concentration 1 mg/mL.

Detection antibody: CCT2 Recombinant monoclonal antibody, PBS Only (Detector) 86898-1-PBS (251618D3). 100 µg. Concentration 1 mg/mL.

Unconjugated rabbit recombinant monoclonal antibody pair in PBS only storage buffer at a concentration of 1 mg/mL, ready for conjugation. Created using Proteintech's proprietary in-house recombinant technology. Recombinant production enables unrivalled batch-to-batch consistency, easy scale-up, and future security of supply.

Matched antibody pairs are designed for use in a variety of assays and platforms that require matched antibody pairs.

Antibody use should be optimized for each application and assay.

Storage

Storage:
Store at -80°C.
Storage buffer:
PBS only

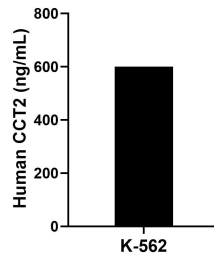
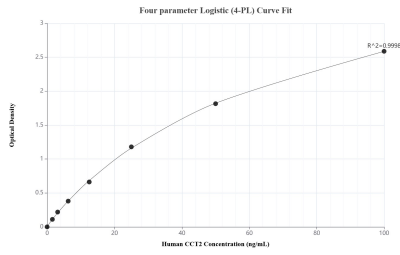
For technical support and original validation data for this product please contact:

T: 1 (888) 4PTGLAB (1-888-478-4522) (toll free in USA), or 1(312) 455-8498 (outside USA)

E: proteintech@ptglab.com
W: ptglab.com

This product is exclusively available under Proteintech Group brand and is not available to purchase from any other manufacturer.

Selected Validation Data



Sandwich ELISA standard curve of MP02720-1, Human CCT2 Recombinant Matched Antibody Pair - PBS only. 86898-2-PBS was coated to a plate as the capture antibody and incubated with serial dilutions of standard Ag19264. 86898-1-PBS was HRP conjugated as the detection antibody. Range: 1.56-100 ng/mL

The mean CCT2 concentration was determined to be 600.11 ng/mL in K-562 cell extract based on a 1.20 mg/mL extract load.