

BPHL Recombinant Matched Antibody Pair, PBS Only

Catalog Number:MP02728-1

Capture Antibody Information

Catalog Number:
86717-2-PBS
Host:
Rabbit
Isotype:
IgG
Purification Method:
Protein A purification

Clone ID:
251414C3
Reactivity:
human
Immunogen Catalog Number:
Ag12085

Conjugate:
Unconjugated
Full name:
biphenyl hydrolase-like (serine hydrolase)
Gene ID:
670

Detection Antibody Information

Catalog Number:
86717-1-PBS
Host:
Rabbit
Isotype:
IgG
Purification Method:
Protein A purification

Clone ID:
251414B3
Reactivity:
human
GenBank:
BC037778
Immunogen Catalog Number:
Ag12085

Conjugate:
Unconjugated
Full name:
biphenyl hydrolase-like (serine hydrolase)
Gene ID:
670

Applications

Tested Applications:
Sandwich ELISA

Range:
0.391-25 ng/mL (Sandwich ELISA)

Recommended Dilutions:
It is recommended that this reagent should be titrated in each testing system to obtain optimal results.

Product Information

MP02728-1 targets BPHL in immunoassays as a matched antibody pair. Validated in Sandwich ELISA.

Capture antibody: BPHL Recombinant monoclonal antibody, PBS Only (Capture) 86717-2-PBS (251414C3). 100 µg. Concentration 1 mg/mL.

Detection antibody: BPHL Recombinant monoclonal antibody, PBS Only (Detector) 86717-1-PBS (251414B3). 100 µg. Concentration 1 mg/mL.

Unconjugated rabbit recombinant monoclonal antibody pair in PBS only storage buffer at a concentration of 1 mg/mL, ready for conjugation. Created using Proteintech's proprietary in-house recombinant technology. Recombinant production enables unrivalled batch-to-batch consistency, easy scale-up, and future security of supply.

Matched antibody pairs are designed for use in a variety of assays and platforms that require matched antibody pairs.

Antibody use should be optimized for each application and assay.

Storage

Storage:
Store at -80°C.
Storage buffer:
PBS only

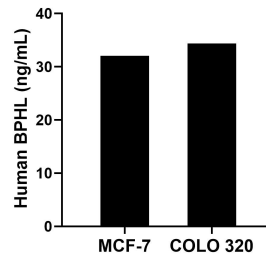
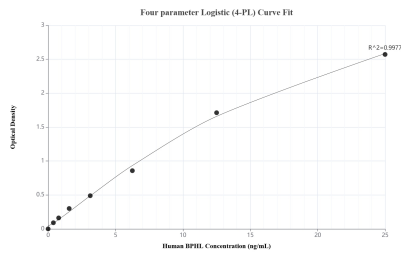
For technical support and original validation data for this product please contact:

T: 1 (888) 4PTGLAB (1-888-478-4522) (toll free in USA), or 1(312) 455-8498 (outside USA)

E: proteintech@ptglab.com
W: ptglab.com

This product is exclusively available under Proteintech Group brand and is not available to purchase from any other manufacturer.

Selected Validation Data



Sandwich ELISA standard curve of MP02728-1, Human BPHL Recombinant Matched Antibody Pair - PBS only. 86717-2-PBS was coated to a plate as the capture antibody and incubated with serial dilutions of standard Ag12085. 86717-1-PBS was HRP conjugated as the detection antibody. Range: 0.391-25 ng/mL

The mean BPHL concentration was determined to be 32.05 ng/mL in MCF-7 cell extract based on a 1.20 mg/mL extract load and 34.36 ng/mL in COLO 320 cell extract based on a 1.50 mg/mL extract load.