

For Research Use Only



# KIR3DL3 Recombinant Matched Antibody Pair, PBS Only

Catalog Number:MP02734-1

## Capture Antibody Information

**Catalog Number:**  
86872-2-PBS  
**Host:**  
Rabbit  
**Isotype:**  
IgG  
**Purification Method:**  
Protein A purification

**Clone ID:**  
250254D5  
**Reactivity:**  
human  
**Immunogen Catalog Number:**  
Eg4358

**Conjugate:**  
Unconjugated  
**Full name:**  
killer cell immunoglobulin-like receptor, three domains, long cytoplasmic tail, 3  
**Gene ID:**  
115653

## Detection Antibody Information

**Catalog Number:**  
86872-1-PBS  
**Host:**  
Rabbit  
**Isotype:**  
IgG  
**Purification Method:**  
Protein A purification

**Clone ID:**  
250254B3  
**Reactivity:**  
human  
**GenBank:**  
/  
**Immunogen Catalog Number:**  
Eg4358

**Conjugate:**  
Unconjugated  
**Full name:**  
killer cell immunoglobulin-like receptor, three domains, long cytoplasmic tail, 3  
**Gene ID:**  
115653

## Applications

**Tested Applications:**  
Cytometric bead array

**Range:**  
0.312-40 ng/mL (Cytometric Bead Array)

**Recommended Dilutions:**  
It is recommended that this reagent should be titrated in each testing system to obtain optimal results.

## Product Information

MP02734-1 targets KIR3DL3 in immunoassays as a matched antibody pair. Validated in Cytometric bead array.

Capture antibody: CD158Z/KIR3DL3 Recombinant monoclonal antibody, PBS Only (Capture) 86872-2-PBS (250254D5). 100 µg. Concentration 1 mg/mL.

Detection antibody: CD158Z/KIR3DL3 Recombinant monoclonal antibody, PBS Only (Detector) 86872-1-PBS (250254B3). 100 µg. Concentration 1 mg/mL.

Unconjugated rabbit recombinant monoclonal antibody pair in PBS only storage buffer at a concentration of 1 mg/mL, ready for conjugation. Created using Proteintech's proprietary in-house recombinant technology. Recombinant production enables unrivalled batch-to-batch consistency, easy scale-up, and future security of supply.

Matched antibody pairs are designed for use in a variety of assays and platforms that require matched antibody pairs.

Antibody use should be optimized for each application and assay.

## Storage

**Storage:**  
Store at -80°C.  
**Storage buffer:**  
PBS only

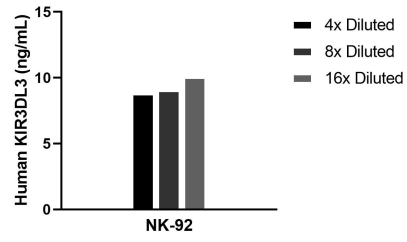
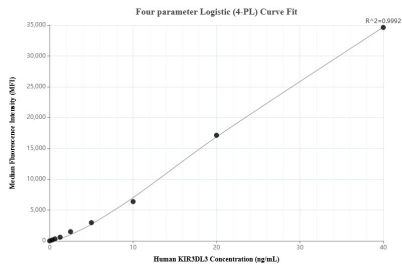
For technical support and original validation data for this product please contact:

T: 1 (888) 4PTGLAB (1-888-478-4522) (toll free in USA), or 1(312) 455-8498 (outside USA)

E: [proteintech@ptglab.com](mailto:proteintech@ptglab.com)  
W: [ptglab.com](http://ptglab.com)

**This product is exclusively available under Proteintech Group brand and is not available to purchase from any other manufacturer.**

## Selected Validation Data



Cytometric bead array standard curve of MPO2734-1, KIR3DL3 Recombinant Matched Antibody Pair, PBS Only. Capture antibody: 86872-2-PBS. Detection antibody: 86872-1-PBS. Standard: Eg4358. Range: 0.312-40 ng/mL

The mean KIR3DL3 concentration was determined to be 9.3 ng/mL in NK-92 cell extract based on a 1.2 mg/mL extract load.