

For Research Use Only

SOLO/SESTD1 Recombinant Matched Antibody Pair, PBS Only



Catalog Number:MP02736-1

Capture Antibody Information

Catalog Number:
86875-2-PBS

Host:
Rabbit

Isotype:
IgG

Purification Method:
Protein A purification

Clone ID:
251894E9

Reactivity:
human, mouse, rat

Immunogen Catalog Number:
Ag21016

Conjugate:
Unconjugated

Full name:
SEC14 and spectrin domains 1

Gene ID:
91404

Detection Antibody Information

Catalog Number:
86875-1-PBS

Host:
Rabbit

Isotype:
IgG

Purification Method:
Protein A purification

Clone ID:
251894D5

Reactivity:
human

GenBank:
BC047578

Immunogen Catalog Number:
Ag21016

Conjugate:
Unconjugated

Full name:
SEC14 and spectrin domains 1

Gene ID:
91404

Applications

Tested Applications:
Cytometric bead array

Range:
0.781-100 ng/mL (Cytometric Bead Array)

Recommended Dilutions:
It is recommended that this reagent should be titrated in each testing system to obtain optimal results.

Product Information

MP02736-1 targets SOLO/SESTD1 in immunoassays as a matched antibody pair. Validated in Cytometric bead array.

Capture antibody: SOLO/SESTD1 Recombinant monoclonal antibody, PBS Only (Capture) 86875-2-PBS (251894E9). 100 µg. Concentration 1 mg/mL.

Detection antibody: SESTD1 Recombinant monoclonal antibody, PBS Only (Detector) 86875-1-PBS (251894D5). 100 µg. Concentration 1 mg/mL.

Unconjugated rabbit recombinant monoclonal antibody pair in PBS only storage buffer at a concentration of 1 mg/mL, ready for conjugation. Created using Proteintech's proprietary in-house recombinant technology. Recombinant production enables unrivalled batch-to-batch consistency, easy scale-up, and future security of supply.

Matched antibody pairs are designed for use in a variety of assays and platforms that require matched antibody pairs.

Antibody use should be optimized for each application and assay.

Storage

Storage:
Store at -80°C.
Storage buffer:
PBS only

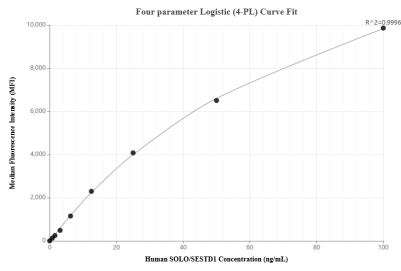
For technical support and original validation data for this product please contact:

T: 1 (888) 4PTGLAB (1-888-478-4522) (toll free in USA), or 1(312) 455-8498 (outside USA)

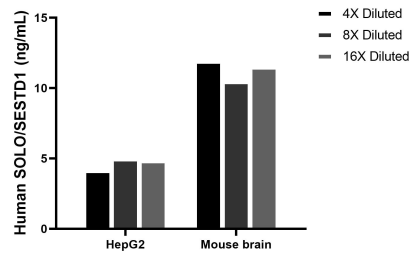
E: proteintech@ptglab.com
W: ptglab.com

This product is exclusively available under Proteintech Group brand and is not available to purchase from any other manufacturer.

Selected Validation Data



Cytometric bead array standard curve of MP02736-1, SOLO/SESTD1 Recombinant Matched Antibody Pair, PBS Only. Capture antibody: 86875-2-PBS. Detection antibody: 86875-1-PBS. Standard: Ag21016. Range: 0.781-100 ng/mL



The mean SOLO/SESTD1 concentration was determined to be 4.6 ng/mL in HepG2 cell extract based on a 1.2 mg/mL extract load, 11.3 ng/mL in Mouse brain tissue extract based on a 3.2 mg/mL extract load.