

For Research Use Only

CXCL7/PPBP Recombinant Matched Antibody Pair, PBS Only



Catalog Number:MP02754-1

Capture Antibody Information

Catalog Number:
86698-3-PBS
Host:
Rabbit
Isotype:
IgG
Purification Method:
Protein A purification

Clone ID:
250712E2
Reactivity:
human
Immunogen Catalog Number:
Eg3690

Conjugate:
Unconjugated
Full name:
pro-platelet basic protein (chemokine (C-X-C motif) ligand 7)
Gene ID:
5473

Detection Antibody Information

Catalog Number:
86698-2-PBS
Host:
Rabbit
Isotype:
IgG
Purification Method:
Protein A purification

Clone ID:
250712B11
Reactivity:
human
GenBank:
NM_002704.3
Immunogen Catalog Number:
Eg3690

Conjugate:
Unconjugated
Full name:
pro-platelet basic protein (chemokine (C-X-C motif) ligand 7)
Gene ID:
5473

Applications

Tested Applications:
Sandwich ELISA

Range:
78.1-5000 pg/mL (Sandwich ELISA)

Recommended Dilutions:
It is recommended that this reagent should be titrated in each testing system to obtain optimal results.

Product Information

MP02754-1 targets CXCL7/PPBP in immunoassays as a matched antibody pair. Validated in Sandwich ELISA.

Capture antibody: CXCL7/NAP-2 Recombinant monoclonal antibody, PBS Only (Capture) 86698-3-PBS (250712E2). 100 µg. Concentration 1 mg/mL.

Detection antibody: CXCL7/NAP-2 Recombinant monoclonal antibody, PBS Only (Detector) 86698-2-PBS (250712B11). 100 µg. Concentration 1 mg/mL.

Unconjugated rabbit recombinant monoclonal antibody pair in PBS only storage buffer at a concentration of 1 mg/mL, ready for conjugation. Created using Proteintech's proprietary in-house recombinant technology. Recombinant production enables unrivalled batch-to-batch consistency, easy scale-up, and future security of supply.

Matched antibody pairs are designed for use in a variety of assays and platforms that require matched antibody pairs.

Antibody use should be optimized for each application and assay.

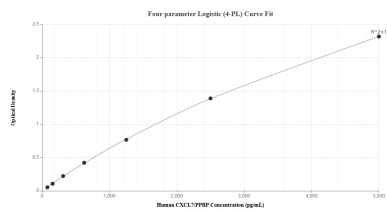
Storage

Storage:
Store at -80°C.
Storage buffer:
PBS only

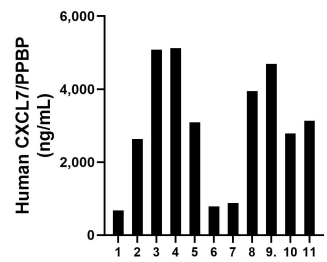
For technical support and original validation data for this product please contact:
T: 1 (888) 4PTGLAB (1-888-478-4522) (toll free in USA), or 1(312) 455-8498 (outside USA)
E: proteintech@ptglab.com
W: ptglab.com

This product is exclusively available under Proteintech Group brand and is not available to purchase from any other manufacturer.

Selected Validation Data



Sandwich ELISA standard curve of MP02754-1, Human CXCL7/PPBP Recombinant Matched Antibody Pair - PBS only. 86698-3-PBS was coated to a plate as the capture antibody and incubated with serial dilutions of standard Eg3690. 86698-2-PBS was HRP conjugated as the detection antibody. Range: 78.1-5000 pg/mL



Plasma of eleven individual healthy human donors was measured. The human CXCL7/PPBP concentration of detected samples was determined to be 3,322.29 ng/mL with a range of 678.34 - 5,123.18 ng/mL.