

For Research Use Only



Mouse Vitamin D binding protein Recombinant Matched Antibody Pair, PBS Only

Catalog Number:MP02757-1

Capture Antibody Information

Catalog Number:
86884-3-PBS

Host:
Rabbit

Isotype:
IgG

Purification Method:
Protein A purification

Clone ID:
251938C4

Reactivity:
mouse

Immunogen Catalog Number:
Eg7266

Conjugate:
Unconjugated

Full name:
group specific component

Gene ID:
14473

Detection Antibody Information

Catalog Number:
86884-2-PBS

Host:
Rabbit

Isotype:
IgG

Purification Method:
Protein A purification

Clone ID:
251938C3

Reactivity:
mouse

GenBank:
NM_008096.2

Immunogen Catalog Number:
Eg7266

Conjugate:
Unconjugated

Full name:
group specific component

Gene ID:
14473

Applications

Tested Applications:
Cytometric bead array, Sandwich
ELISA

Range:
0.156-20 ng/mL (Cytometric Bead
Array)
78.1-5000 pg/mL (Sandwich ELISA)

Recommended Dilutions:
It is recommended that this reagent
should be titrated in each testing
system to obtain optimal results.

Product Information

MP02757-1 targets Vitamin D binding protein in immunoassays as a matched antibody pair. Validated in Cytometric bead array, Sandwich ELISA.

Capture antibody: Mouse Vitamin D binding protein Recombinant monoclonal antibody, PBS Only (Capture) 86884-3-PBS (251938C4). 100 µg. Concentration 1 mg/mL.

Detection antibody: Mouse Vitamin D binding protein Recombinant monoclonal antibody, PBS Only (Detector) 86884-2-PBS (251938C3). 100 µg. Concentration 1 mg/mL.

Unconjugated rabbit recombinant monoclonal antibody pair in PBS only storage buffer at a concentration of 1 mg/mL, ready for conjugation. Created using Proteintech's proprietary in-house recombinant technology. Recombinant production enables unrivalled batch-to-batch consistency, easy scale-up, and future security of supply.

Matched antibody pairs are designed for use in a variety of assays and platforms that require matched antibody pairs.

Antibody use should be optimized for each application and assay.

Storage

Storage:
Store at -80°C.
Storage buffer:
PBS only

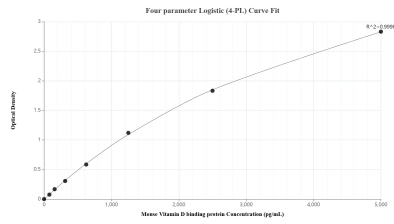
For technical support and original validation data for this product please contact:

T: 1 (888) 4PTGLAB (1-888-478-4522) (toll free
in USA), or 1(312) 455-8498 (outside USA)

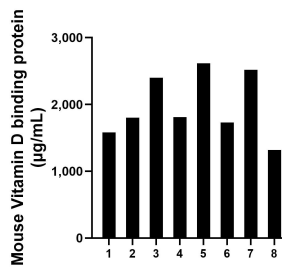
E: proteintech@ptglab.com
W: ptglab.com

This product is exclusively available under Proteintech Group brand and is not available to purchase from any other manufacturer.

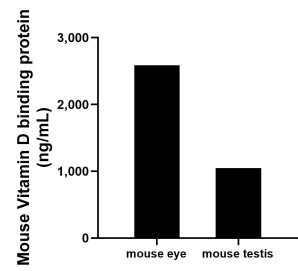
Selected Validation Data



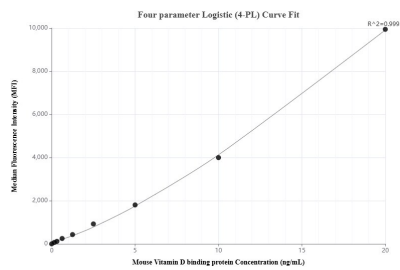
Sandwich ELISA standard curve of MP02757-1, Mouse Vitamin D binding protein Recombinant Matched Antibody Pair - PBS only. 86884-3-PBS was coated to a plate as the capture antibody and incubated with serial dilutions of standard Eg7266. 86884-2-PBS was HRP conjugated as the detection antibody. Range: 78.1-5000 pg/mL



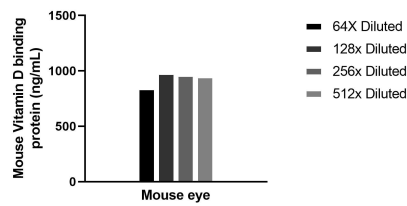
Serum of eight mice was measured. The Vitamin D binding protein concentration of detected samples was determined to be 1,971.9 µg/mL with a range of 1,318.6-2,615.8 µg/mL



The mean Vitamin D binding protein concentration was determined to be 2,589.1 ng/mL in mouse eye tissue extract based on a 12.4 mg/mL extract load and 1,046.4 ng/mL in mouse testis tissue extract based on a 1.1 mg/mL extract load.



Cytometric bead array standard curve of MP02757-1, MOUSE Vitamin D binding protein Recombinant Matched Antibody Pair, PBS Only. Capture antibody: 86884-3-PBS. Detection antibody: 86884-2-PBS. Standard: Eg7266. Range: 0.156-20 ng/mL



The mean Vitamin D binding protein concentration was determined to be 932.6 ng/mL in Mouse eye tissue extract based on a 12.4 mg/mL extract load.