

For Research Use Only

# DDX41 Recombinant Matched Antibody Pair, PBS Only



Catalog Number:MP02765-1

## Capture Antibody Information

**Catalog Number:**  
86894-1-PBS

**Host:**  
Rabbit

**Isotype:**  
IgG

**Purification Method:**  
Protein A purification

**Clone ID:**  
252011G10

**Reactivity:**  
human, mouse, rat

**Immunogen Catalog Number:**  
Ag26593

**Conjugate:**  
Unconjugated

**Full name:**  
DEAD (Asp-Glu-Ala-Asp) box polypeptide 41

**Gene ID:**  
51428

## Detection Antibody Information

**Catalog Number:**  
86894-2-PBS

**Host:**  
Rabbit

**Isotype:**  
IgG

**Purification Method:**  
Protein A purification

**Clone ID:**  
252011E1

**Reactivity:**  
human

**GenBank:**  
BC015476

**Immunogen Catalog Number:**  
Ag26593

**Conjugate:**  
Unconjugated

**Full name:**  
DEAD (Asp-Glu-Ala-Asp) box polypeptide 41

**Gene ID:**  
51428

## Applications

**Tested Applications:**  
Cytometric bead array

**Range:**  
0.156-20 ng/mL (Cytometric Bead Array)

**Recommended Dilutions:**  
It is recommended that this reagent should be titrated in each testing system to obtain optimal results.

## Product Information

MP02765-1 targets DDX41 in immunoassays as a matched antibody pair. Validated in Cytometric bead array.

Capture antibody: DDX41 Recombinant monoclonal antibody, PBS Only (Capture) 86894-1-PBS (252011G10). 100 µg. Concentration 1 mg/mL.

Detection antibody: DDX41 Recombinant monoclonal antibody, PBS Only (Detector) 86894-2-PBS (252011E1). 100 µg. Concentration 1 mg/mL.

Unconjugated rabbit recombinant monoclonal antibody pair in PBS only storage buffer at a concentration of 1 mg/mL, ready for conjugation. Created using Proteintech's proprietary in-house recombinant technology. Recombinant production enables unrivalled batch-to-batch consistency, easy scale-up, and future security of supply.

Matched antibody pairs are designed for use in a variety of assays and platforms that require matched antibody pairs.

Antibody use should be optimized for each application and assay.

## Storage

**Storage:**  
Store at -80°C.  
**Storage buffer:**  
PBS only

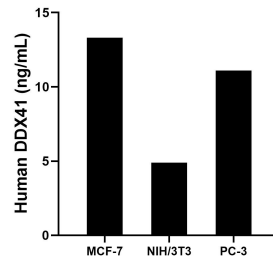
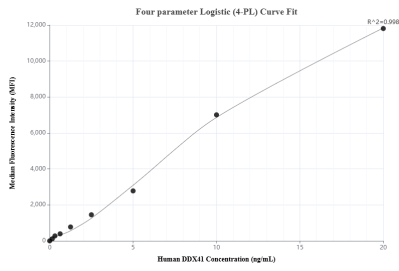
For technical support and original validation data for this product please contact:

T: 1 (888) 4PTGLAB (1-888-478-4522) (toll free in USA), or 1(312) 455-8498 (outside USA)

E: [proteintech@ptglab.com](mailto:proteintech@ptglab.com)  
W: [ptglab.com](http://ptglab.com)

**This product is exclusively available under Proteintech Group brand and is not available to purchase from any other manufacturer.**

## Selected Validation Data



Cytometric bead array standard curve of MP02765-1, DDX41 Recombinant Matched Antibody Pair, PBS Only. Capture antibody: 86894-1-PBS. Detection antibody: 86894-2-PBS. Standard: Ag26593. Range: 0.156-20 ng/mL

The mean DDX41 concentration was determined to be 13.3 ng/mL in MCF-7 cell extract based on a 1.3 mg/mL extract load, 4.9 ng/mL in NIH/3T3 cell extract based on a 1.2 mg/mL extract load, 11.1 ng/mL in PC-3 cell extract based on a 1.2 mg/mL extract load.