

For Research Use Only

# Fibrinogen Alpha Chain Recombinant Matched Antibody Pair, PBS Only



Catalog Number:MP02768-1

## Capture Antibody Information

Catalog Number:  
86913-2-PBS

Host:  
Rabbit

Isotype:  
IgG

Purification Method:  
Protein A purification

Clone ID:  
251931E2

Reactivity:  
human

Immunogen Catalog Number:  
Eg4643

Conjugate:  
Unconjugated

Full name:  
fibrinogen alpha chain

Gene ID:  
2243

## Detection Antibody Information

Catalog Number:  
86913-1-PBS

Host:  
Rabbit

Isotype:  
IgG

Purification Method:  
Protein A purification

Clone ID:  
251931C8

Reactivity:  
human

GenBank:  
NM\_000508.4

Immunogen Catalog Number:  
Eg4643

Conjugate:  
Unconjugated

Full name:  
fibrinogen alpha chain

Gene ID:  
2243

## Applications

Tested Applications:  
Cytometric bead array

Range:  
0.625-40 ng/mL (Cytometric Bead Array)

Recommended Dilutions:  
It is recommended that this reagent should be titrated in each testing system to obtain optimal results.

## Product Information

MP02768-1 targets Fibrinogen Alpha Chain in immunoassays as a matched antibody pair. Validated in Cytometric bead array.

Capture antibody: Fibrinogen alpha chain Recombinant monoclonal antibody, PBS Only (Capture) 86913-2-PBS (251931E2). 100 µg. Concentration 1 mg/mL.

Detection antibody: Fibrinogen alpha chain Recombinant monoclonal antibody, PBS Only (Detector) 86913-1-PBS (251931C8). 100 µg. Concentration 1 mg/mL.

Unconjugated rabbit recombinant monoclonal antibody pair in PBS only storage buffer at a concentration of 1 mg/mL, ready for conjugation. Created using Proteintech's proprietary in-house recombinant technology. Recombinant production enables unrivalled batch-to-batch consistency, easy scale-up, and future security of supply.

Matched antibody pairs are designed for use in a variety of assays and platforms that require matched antibody pairs.

Antibody use should be optimized for each application and assay.

## Storage

Storage:  
Store at -80°C.  
Storage buffer:  
PBS only

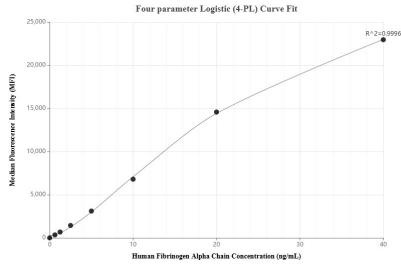
For technical support and original validation data for this product please contact:

T: 1 (888) 4PTGLAB (1-888-478-4522) (toll free in USA), or 1(312) 455-8498 (outside USA)

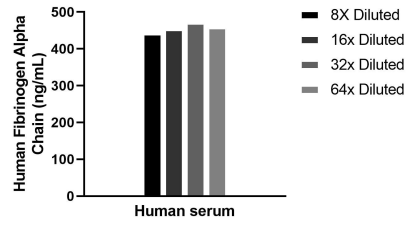
E: [proteintech@ptglab.com](mailto:proteintech@ptglab.com)  
W: [ptglab.com](http://ptglab.com)

This product is exclusively available under Proteintech Group brand and is not available to purchase from any other manufacturer.

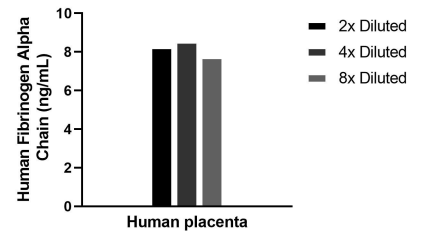
## Selected Validation Data



Cytometric bead array standard curve of MP02768-1, Fibrinogen Alpha Chain Recombinant Matched Antibody Pair, PBS Only. Capture antibody: 86913-2-PBS. Detection antibody: 86913-1-PBS. Standard: Eg4643. Range: 0.625-40 ng/mL



The mean Fibrinogen Alpha Chain concentration was determined to be 455.5 ng/mL in human serum.



The mean Fibrinogen Alpha Chain concentration was determined to be 8.2 ng/mL in Human placenta tissue extract based on a 3.2 mg/mL extract load.