

For Research Use Only

Fibrinogen Alpha Chain Recombinant Matched Antibody Pair, PBS Only



Catalog Number:MP02768-2

Capture Antibody Information

Catalog Number:
86913-5-PBS

Host:
Rabbit

Isotype:
IgG

Purification Method:
Protein A purification

Clone ID:
251931B1

Reactivity:
human

Immunogen Catalog Number:
Eg4643

Conjugate:
Unconjugated

Full name:
fibrinogen alpha chain

Gene ID:
2243

Detection Antibody Information

Catalog Number:
86913-4-PBS

Host:
Rabbit

Isotype:
IgG

Purification Method:
Protein A purification

Clone ID:
251931C2

Reactivity:
human

GenBank:
NM_000508.4

Immunogen Catalog Number:
Eg4643

Conjugate:
Unconjugated

Full name:
fibrinogen alpha chain

Gene ID:
2243

Applications

Tested Applications:
Sandwich ELISA

Range:
0.156-10 ng/mL (Sandwich ELISA)

Recommended Dilutions:
It is recommended that this reagent should be titrated in each testing system to obtain optimal results.

Product Information

MP02768-2 targets Fibrinogen Alpha Chain in immunoassays as a matched antibody pair. Validated in Sandwich ELISA.

Capture antibody: Fibrinogen alpha chain Recombinant monoclonal antibody, PBS Only (Capture) 86913-5-PBS (251931B1). 100 µg. Concentration 1 mg/mL.

Detection antibody: Fibrinogen alpha chain Recombinant monoclonal antibody, PBS Only (Detector) 86913-4-PBS (251931C2). 100 µg. Concentration 1 mg/mL.

Unconjugated rabbit recombinant monoclonal antibody pair in PBS only storage buffer at a concentration of 1 mg/mL, ready for conjugation. Created using Proteintech's proprietary in-house recombinant technology. Recombinant production enables unrivalled batch-to-batch consistency, easy scale-up, and future security of supply.

Matched antibody pairs are designed for use in a variety of assays and platforms that require matched antibody pairs.

Antibody use should be optimized for each application and assay.

Storage

Storage:
Store at -80°C.
Storage buffer:
PBS only

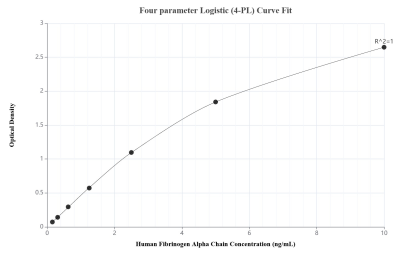
For technical support and original validation data for this product please contact:

T: 1 (888) 4PTGLAB (1-888-478-4522) (toll free in USA), or 1(312) 455-8498 (outside USA)

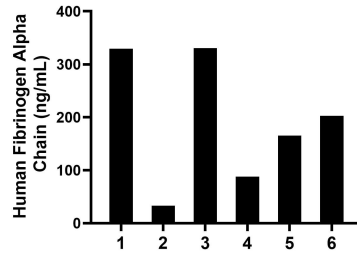
E: proteintech@ptglab.com
W: ptglab.com

This product is exclusively available under Proteintech Group brand and is not available to purchase from any other manufacturer.

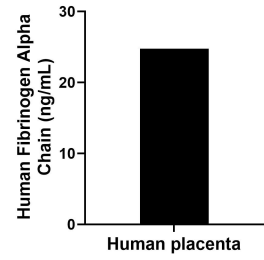
Selected Validation Data



Sandwich ELISA standard curve of MP02768-2, Human Fibrinogen Alpha Chain Recombinant Matched Antibody Pair - PBS only. 86913-5-PBS was coated to a plate as the capture antibody and incubated with serial dilutions of standard Eg4643. 86913-4-PBS was HRP conjugated as the detection antibody. Range: 0.156-10 ng/mL



Urine of six individual healthy human donors was measured. The Fibrinogen Alpha Chain concentration of detected samples was determined to be 191.44 ng/mL with a range of 33.10-330.50 ng/mL



The mean Fibrinogen Alpha Chain concentration was determined to be 24.76 ng/mL in human placenta extract based on a 3.80 mg/mL extract load.