

For Research Use Only

# IGJ Recombinant Matched Antibody Pair, PBS Only



Catalog Number:MP02790-2

## Capture Antibody Information

**Catalog Number:**  
86939-6-PBS  
**Host:**  
Rabbit  
**Isotype:**  
IgG  
**Purification Method:**  
Protein A purification

**Clone ID:**  
251691A6  
**Reactivity:**  
human  
**Immunogen Catalog Number:**  
Ag4559

**Conjugate:**  
Unconjugated  
**Full name:**  
immunoglobulin J polypeptide, linker protein for immunoglobulin alpha and mu polypeptides  
**Gene ID:**  
3512

## Detection Antibody Information

**Catalog Number:**  
86939-5-PBS  
**Host:**  
Rabbit  
**Isotype:**  
IgG  
**Purification Method:**  
Protein A purification

**Clone ID:**  
251691C7  
**Reactivity:**  
human  
**GenBank:**  
BC038982  
**Immunogen Catalog Number:**  
Ag4559

**Conjugate:**  
Unconjugated  
**Full name:**  
immunoglobulin J polypeptide, linker protein for immunoglobulin alpha and mu polypeptides  
**Gene ID:**  
3512

## Applications

**Tested Applications:**  
Sandwich ELISA

**Range:**  
0.313-10 ng/mL (Sandwich ELISA)

**Recommended Dilutions:**  
It is recommended that this reagent should be titrated in each testing system to obtain optimal results.

## Product Information

MP02790-2 targets IGJ in immunoassays as a matched antibody pair. Validated in Sandwich ELISA.

Capture antibody: IGJ Recombinant monoclonal antibody, PBS Only (Capture) 86939-6-PBS (251691A6). 100 µg. Concentration 1 mg/mL.

Detection antibody: IGJ Recombinant monoclonal antibody, PBS Only (Detector) 86939-5-PBS (251691C7). 100 µg. Concentration 1 mg/mL.

Unconjugated rabbit recombinant monoclonal antibody pair in PBS only storage buffer at a concentration of 1 mg/mL, ready for conjugation. Created using Proteintech's proprietary in-house recombinant technology. Recombinant production enables unrivalled batch-to-batch consistency, easy scale-up, and future security of supply.

Matched antibody pairs are designed for use in a variety of assays and platforms that require matched antibody pairs.

Antibody use should be optimized for each application and assay.

## Storage

**Storage:**  
Store at -80°C.  
**Storage buffer:**  
PBS only

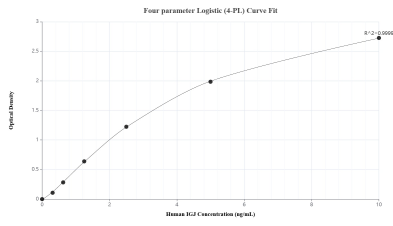
For technical support and original validation data for this product please contact:

T: 1 (888) 4PTGLAB (1-888-478-4522) (toll free in USA), or 1(312) 455-8498 (outside USA)

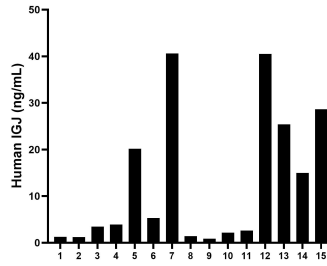
E: [proteintech@ptglab.com](mailto:proteintech@ptglab.com)  
W: [ptglab.com](http://ptglab.com)

**This product is exclusively available under Proteintech Group brand and is not available to purchase from any other manufacturer.**

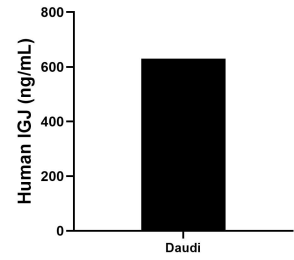
## Selected Validation Data



Sandwich ELISA standard curve of MP02790-2, Human IgJ Recombinant Matched Antibody Pair - PBS only. 86939-6-PBS was coated to a plate as the capture antibody and incubated with serial dilutions of standard Ag4559. 86939-5-PBS was HRP conjugated as the detection antibody. Range: 0.313-10 ng/mL.



Serum of fifteen individual healthy human donors was measured. The IgJ concentration of detected samples was determined to be 12.84 ng/mL with a range of 0.85-40.61 ng/mL.



The mean IgJ concentration was determined to be 630.09 ng/mL in Daudi cell extract based on a 1.10 mg/mL extract load.