

For Research Use Only

PTPRF Recombinant Matched Antibody Pair, PBS Only



Catalog Number:MP02791-1

Capture Antibody Information

Catalog Number:
86944-1-PBS

Host:
Rabbit

Isotype:
IgG

Purification Method:
Protein A purification

Clone ID:
252028F8

Reactivity:
human

Immunogen Catalog Number:
Eg6919

Conjugate:
Unconjugated

Full name:
protein tyrosine phosphatase,
receptor type, F

Gene ID:
5792

Detection Antibody Information

Catalog Number:
86944-2-PBS

Host:
Rabbit

Isotype:
IgG

Purification Method:
Protein A purification

Clone ID:
252028B7

Reactivity:
human

GenBank:
NM_002840.4

Immunogen Catalog Number:
Eg6919

Conjugate:
Unconjugated

Full name:
protein tyrosine phosphatase,
receptor type, F

Gene ID:
5792

Applications

Tested Applications:
Cytometric bead array, Sandwich
ELISA

Range:
0.625-40 ng/mL (Cytometric Bead
Array)
78.1-5000 pg/mL (Sandwich ELISA)

Recommended Dilutions:
It is recommended that this reagent
should be titrated in each testing
system to obtain optimal results.

Product Information

MP02791-1 targets PTPRF in immunoassays as a matched antibody pair. Validated in Cytometric bead array, Sandwich ELISA.

Capture antibody: PTPRF Recombinant monoclonal antibody, PBS Only (Capture) 86944-1-PBS (252028F8). 100 µg. Concentration 1 mg/mL.

Detection antibody: PTPRF Recombinant monoclonal antibody, PBS Only (Detector) 86944-2-PBS (252028B7). 100 µg. Concentration 1 mg/mL.

Unconjugated rabbit recombinant monoclonal antibody pair in PBS only storage buffer at a concentration of 1 mg/mL, ready for conjugation. Created using Proteintech's proprietary in-house recombinant technology. Recombinant production enables unrivalled batch-to-batch consistency, easy scale-up, and future security of supply.

Matched antibody pairs are designed for use in a variety of assays and platforms that require matched antibody pairs.

Antibody use should be optimized for each application and assay.

Storage

Storage:
Store at -80°C.
Storage buffer:
PBS only

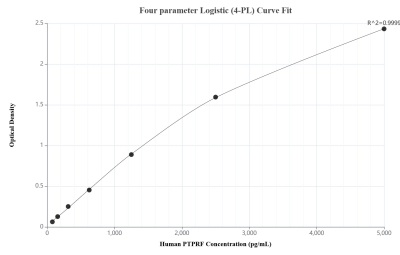
For technical support and original validation data for this product please contact:

T: 1 (888) 4PTGLAB (1-888-478-4522) (toll free in USA), or 1(312) 455-8498 (outside USA)

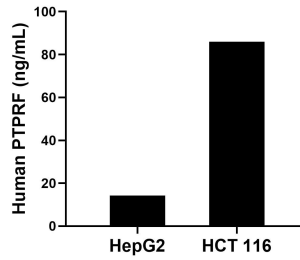
E: proteintech@ptglab.com
W: ptglab.com

This product is exclusively available under Proteintech Group brand and is not available to purchase from any other manufacturer.

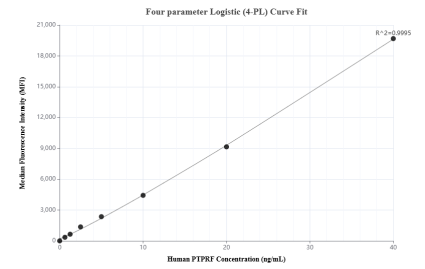
Selected Validation Data



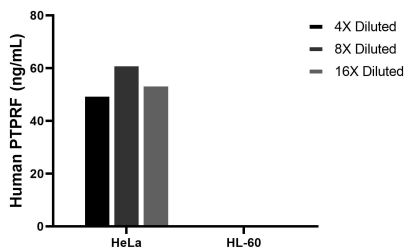
Sandwich ELISA standard curve of MP02791-1, Human PTPRF Recombinant Matched Antibody Pair - PBS only. 86944-1-PBS was coated to a plate as the capture antibody and incubated with serial dilutions of standard Eg6919. 86944-2-PBS was HRP conjugated as the detection antibody. Range: 78.1-5000 pg/mL



The mean PTPRF concentration was determined to be 14.2 ng/mL in HepG2 cell extract based on a 1.2 mg/mL extract load and 85.9 ng/mL in HCT 116 cell extract based on a 1.3 mg/mL extract load.



Cytometric bead array standard curve of MP02791-1, PTPRF Recombinant Matched Antibody Pair, PBS Only. Capture antibody: 86944-1-PBS. Detection antibody: 86944-2-PBS. Standard: Eg6919. Range: 0.625-40 ng/mL



The mean PTPRF concentration was determined to be 55.3 ng/mL in HeLa cell extract based on a 1.2 mg/mL extract load, HL-60 cell extract were served as a negative control.