

For Research Use Only

# Mouse Sema5a Recombinant Matched Antibody Pair, PBS Only



Catalog Number:MP02795-1

## Capture Antibody Information

Catalog Number:  
86961-2-PBS

Host:  
Rabbit

Isotype:  
IgG

Purification Method:  
Protein A purification

Clone ID:  
251962D8

Reactivity:  
mouse

Immunogen Catalog Number:  
Eg2689

Conjugate:  
Unconjugated

Full name:  
sema domain, seven thrombospondin repeats (type 1 and type 1-like), transmembrane domain (TM) and short cytoplasmic domain, (semaphorin) 5A

Gene ID:  
20356

## Detection Antibody Information

Catalog Number:  
86961-1-PBS

Host:  
Rabbit

Isotype:  
IgG

Purification Method:  
Protein A purification

Clone ID:  
251962B12

Reactivity:  
mouse

GenBank:  
NM\_009154.2

Immunogen Catalog Number:  
Eg2689

Conjugate:  
Unconjugated

Full name:  
sema domain, seven thrombospondin repeats (type 1 and type 1-like), transmembrane domain (TM) and short cytoplasmic domain, (semaphorin) 5A

Gene ID:  
20356

## Applications

Tested Applications:  
Cytometric bead array

Range:  
0.781-100 ng/mL (Cytometric Bead Array)

Recommended Dilutions:  
It is recommended that this reagent should be titrated in each testing system to obtain optimal results.

## Product Information

MP02795-1 targets Sema5a in immunoassays as a matched antibody pair. Validated in Cytometric bead array.  
Capture antibody: Mouse Sema5a Recombinant monoclonal antibody, PBS Only (Capture) 86961-2-PBS (251962D8). 100 µg. Concentration 1 mg/mL.

Detection antibody: Mouse Sema5a Recombinant monoclonal antibody, PBS Only (Detector) 86961-1-PBS (251962B12). 100 µg. Concentration 1 mg/mL.

Unconjugated rabbit recombinant monoclonal antibody pair in PBS only storage buffer at a concentration of 1 mg/mL, ready for conjugation. Created using Proteintech's proprietary in-house recombinant technology. Recombinant production enables unrivalled batch-to-batch consistency, easy scale-up, and future security of supply.

Matched antibody pairs are designed for use in a variety of assays and platforms that require matched antibody pairs.

Antibody use should be optimized for each application and assay.

## Storage

Storage:  
Store at -80°C.  
Storage buffer:  
PBS only

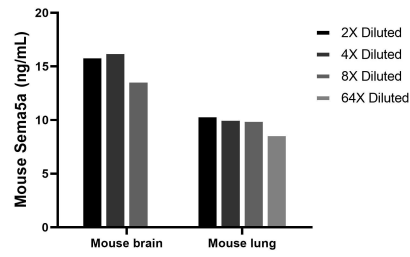
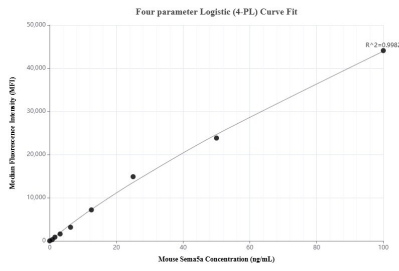
For technical support and original validation data for this product please contact:

T: 1 (888) 4PTGLAB (1-888-478-4522) (toll free in USA), or 1(312) 455-8498 (outside USA)

E: [proteintech@ptglab.com](mailto:proteintech@ptglab.com)  
W: [ptglab.com](http://ptglab.com)

This product is exclusively available under Proteintech Group brand and is not available to purchase from any other manufacturer.

## Selected Validation Data



Cytometric bead array standard curve of MPO2795-1, MOUSE Sema5a Recombinant Matched Antibody Pair, PBS Only. Capture antibody: 86961-2-PBS. Detection antibody: 86961-1-PBS. Standard: Eg2689. Range: 0.781-100 ng/mL.

The mean Sema5a concentration was determined to be 15.4 ng/mL in mouse brain tissue extract based on a 6.3 mg/mL extract load, 9.9 ng/mL in mouse lung tissue extract based on a 5.3 mg/mL extract load.